

A. Model 107

Removal

- 1 Unscrew screw (20).
- 2 Unscrew engine mount (17) from cross member.
- 3 Lift engine at oil pan by means of pit lift.

Note: Use wooden base to prevent damage to the oil pan.

- 4 Remove engine mount.

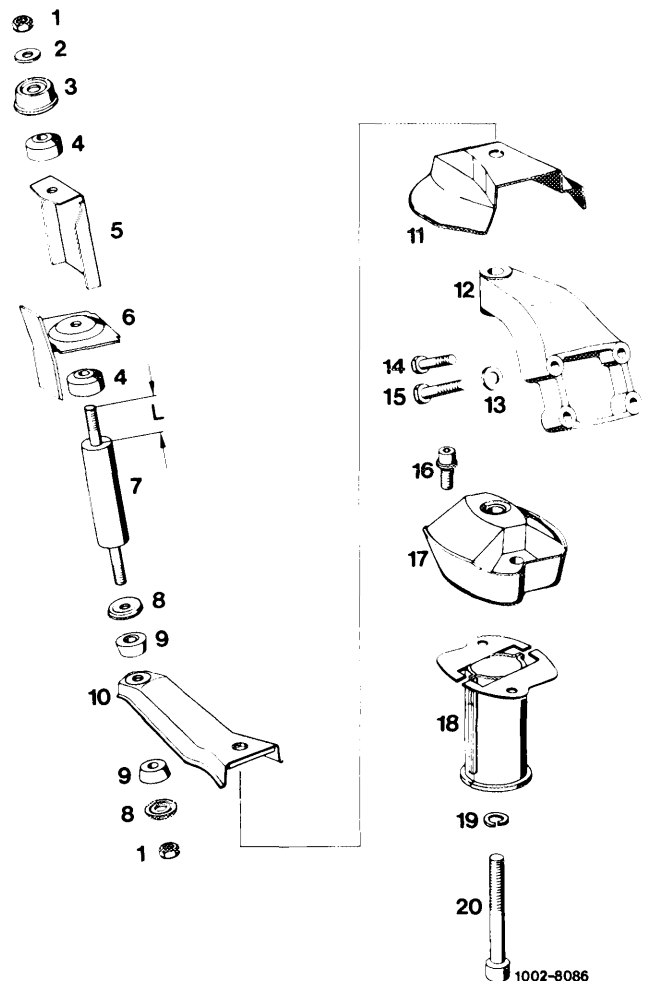
Installation

- 5 For installation proceed vice versa.
- 6 Tighten screw (20) to 75 Nm.

Caution!

Check regulating linkage for proper function.

- 1 Nut M 6
- 2 Washer A 7,4
- 3 Cup washer 43 mm dia.
- 4 Rubber buffer 36 mm dia.
- 5 Shielding plate
- 6 Bracket on side member
- 7 Engine shock absorber, L = 45 mm
- 8 Cup washer 30 mm dia.
- 9 Rubber buffer 26 mm dia.
- 10 Bracket left
Bracket right
- 11 Shielding plate
- 12 Engine carrier left 116 223 46 04
Engine carrier right 116 223 47 04
- 13 Washer A 8,4
- 14 Screw M 8 x 45
- 15 Screw M 8 x 60
- 16 Combination screw M 8 x 18
- 17 Engine mount left (1 white dot)
Engine mount right (2 white dots)
- 18 Guide sleeve
- 19 Spring washer B 12
- 20 Screw M 12 x 80



B. Model 126

Removal

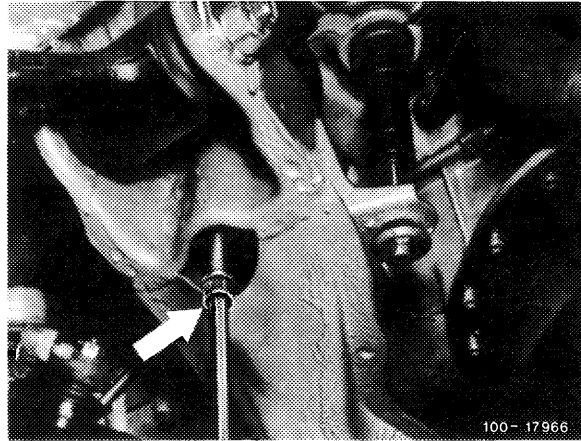
1 Unscrew screw (15, arrow) from underside of vehicle.

2 Unscrew nut (1) from engine shock absorber below.

3 Lift engine at oil pan by means of pit lift.

Note: Use wooden base to prevent damage to oil pan.

4 Unscrew screws (13) and remove engine mount.



Installation

5 For installation proceed vice versa.

Note: The shielding plate is located at the left.

6 Tighten screw (15, arrow) to 70 Nm.

