

Repair kits

Set of gaskets	000 586 55 46
Pump insert	000 586 07 46
Input shaft, bushing	000 586 56 46
Volume control valve (60 bar gauge pressure)	000 586 60 46

End play of input shaft

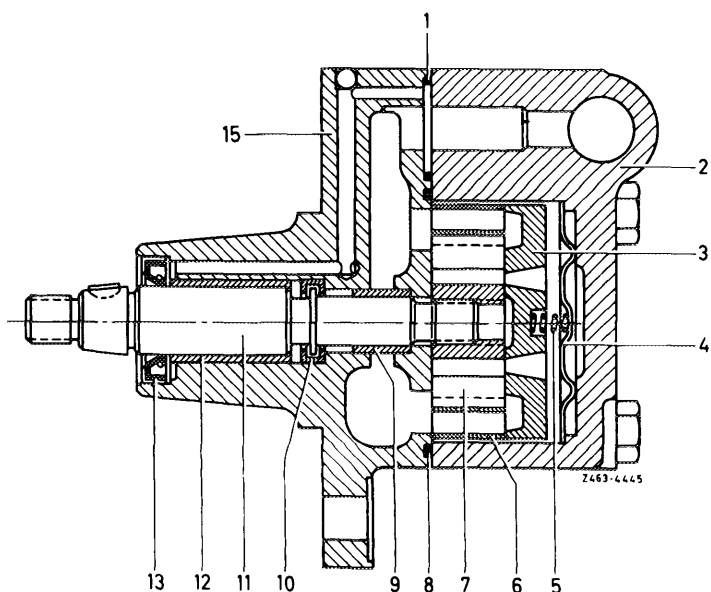
On new pumps	max. 0.7
On used pumps	max. 1.0

1 Check parting surface of housing cover (15) and ground sides of rotor (7). If the parting surface of the housing cover is worn, renew complete power steering pump.

2 Check end play of input shaft (11), which is max. 0.7 mm for a new pump and should not be more than 1 mm for a used pump.

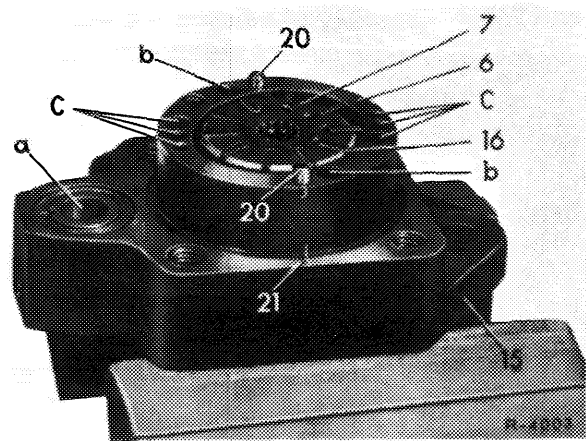
If end play is higher, press input shaft out of housing, watching out for the two shell halves (10).

- 1 O-ring
- 2 Pump housing
- 3 Pressure plate
- 4 Oil guide plate
- 5 Compression spring
- 6 Cam ring
- 7 Rotor with blade
- 8 O-ring
- 9 Bearing bushing
- 10 Shell half
- 11 Input shaft
- 12 Bearing bushing
- 13 Sealing ring
- 15 Housing cover



3 Check blades in grooves of rotor (7) for easy sliding in rotor. Check sliding surface of blades on cam ring (6) for wear. If required, recondition powersteering pump by means of repair kit "pump insert".

Note: The sliding surface of the cam ring should show no noticeable marks, since delivery capacity and smooth running of powersteering pump depend on absence of such marks.



4 Check ground surfaces of volume control valve (32) and bore in pump housing for wear and damage. If the sliding surfaces show score marks, **replace complete powersteering pump**. Never replace volume control valve only.

