

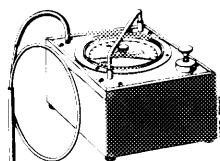
42–325 Checking the brake circuit

Data

Pressure against brake pedal		Bar vacuum (atü)	Line pressure bar	Gauge pressure (atü)
N	(kp)		Teves T 51/909 Bendix B 90	Teves T 52/225
50	(5)	0.75–0.8	10–17	4–8
100	(10)		25–36	21–28
150	(15)		42–55	38–48
200	(20)		58–73	55–68
250	(25)		74–81	73–81
300	(30)		79–86	78–85
Overlap between push rod piston of main cylinder and push rod of brake unit				0.2–1.2

Special tool

Vacuum tester



116 589 25 21 00

Conventional tools

Pressure tester

e.g. made by ATE, D-6000 Frankfurt/M.
Order no. 3.9305-1020.4

Pedal pressure meter

e.g. made by Hofmann Prüftechnik,
D-3210 Elze 1
Order no. PKM 60

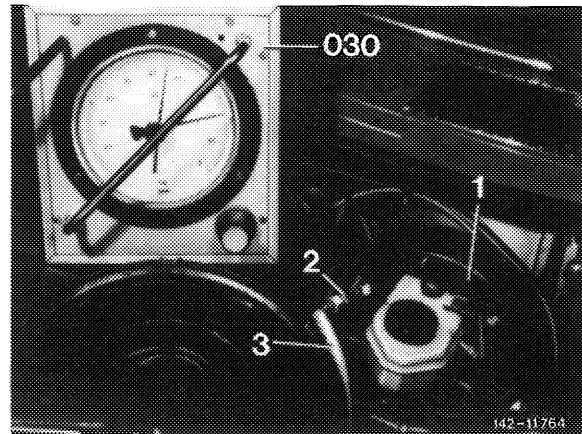
Self-made tool

Measuring connection

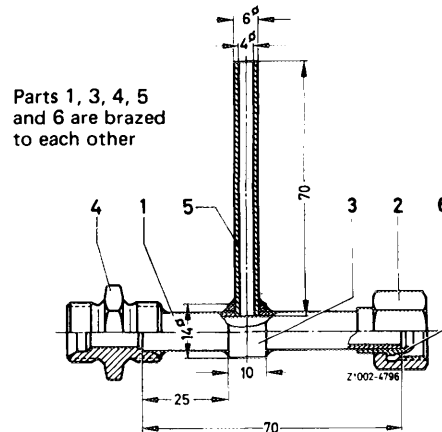
refer to illustration item 2, note

Checkup

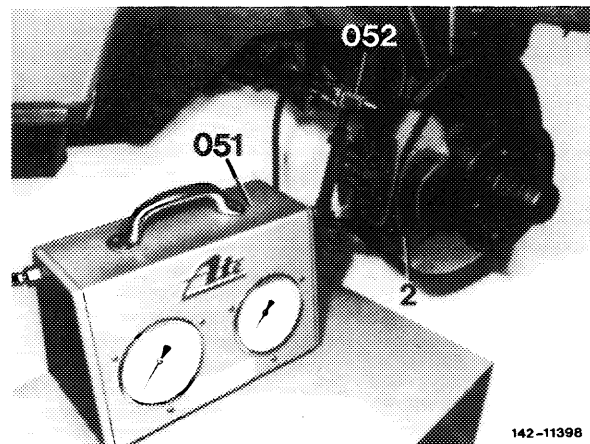
- 1 Loosen vacuum line (3) on brake unit (1) and attach measuring connection (2) between line and brake unit.
- 2 Connect vacuum tester (030) to measuring connection (2).



Note: The measuring connection is self-made according to dimensions shown in illustration. For connection to brake unit, the pipe elbow and coupling nut of a used vacuum line may be taken. Connection to vacuum line is made by means of a screw connection.



- 3 Connect pressure tester (051) to a caliper. For this purpose, unscrew bleeder plug and screw-in connection (052). Then bleed tester.
- 4 Attach pedal force meter to brake pedal.
- 5 Run engine and establish a vacuum of 0.75–0.8 bar (atü) by acceleration and sudden release of acceleration pedal.



If only a slightly reduced vacuum is attained or if a vacuum drops off immediately, the reason may be as follows:

- a) Leaking vacuum line or leaking connections.
- b) Check valve is not operating correctly.
- c) Damaged O-ring between brake unit and tandem main cylinder.

- d) Damaged vacuum seals in tandem main cylinder; as a result, air can enter from atmosphere through leak hole of main cylinder into brake unit.
- e) Damaged sealing ring on control housing of brake unit. The sealing ring cannot be renewed with workshop equipment and must be replaced.
- f) Damaged vacuum pump.

6 With a vacuum of 0.75–0.8 bar (atü) available, measure respective line pressure as specified on brake pedal.

Note: If the measured line pressures deviate by more than ± 10 bar gauge pressure (atü), renew brake unit.

7 Remove pedal pressure meter and instruments used for testing.

8 Bleed brake system at caliper only to which the pressure tester was connected (42–010).