
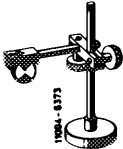

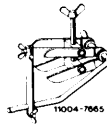


## 42–220 Removal and installation of brake disc on front axle

### Data

Model	114.00 114.01 114.02 115.000 115.002 115.010 115.015 115.100 115.102 115.103 115.110 115.112 115.115 1st version	115.005 115.017 115.105 115.107 115.108 115.117 115.119 and 114.000 114.01 114.02	115.000 115.002 115.010 115.015 115.100 115.102 115.103 115.110 115.112 115.115 2nd vers.	115.06, 114.07 115.114 and 114.000, 114.011, 114.015, 114.017, 114.023 3rd version
Thickness of brake disc	12.6			
Wear limit	on caliper with 57 mm piston dia.		11.05	
	on caliper with 60 mm piston dia.		10.6	
Brake disc dia.	273 ± 0.2		278 ± 0.2	
Fitted bore dia.	69.50	80.05		
	69.55	80.00		
Lateral runout	max. 0.12			
<b>Tightening torques</b>			Nm (kpm)	
Self-locking hex. socket screw for attaching brake disc to front wheel hub			115 (11.5)	
Hex. fitted screw for attaching caliper to steering knuckle			115 (11.5)	
<b>Special tools</b>				
Puller and pressing-on tool for hub cap			116 589 22 33 00	
Dial gauge holder for adjusting wheel bearing play			116 589 12 21 00	
Puller for wheel hub			116 589 17 33 00	

Dial gauge holder for lateral runout of brake disc



001 589 63 21 00

Slide gauge for measuring thickness of brake disc



000 589 37 19 00

### Conventional tools

Open double box wrench 9 x 11 mm

e.g. made by Hazet, D-5630 Remscheid  
Order no. 612

Dial gauge A 1 DIN 878

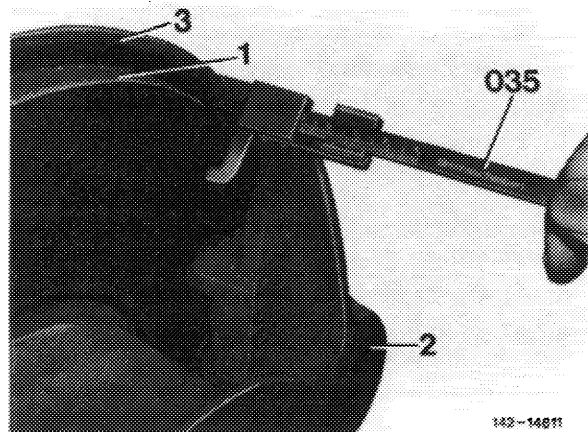
e.g. made by Mahr, D-7300 Esslingen  
Order no. 810

### Note

When checking brake disc, proceed as follows:

- a) Measure thickness of brake disc between cover plate and caliper, or with brake shoe blocks removed, in shaft, by means of slide gauge.
- b) Check visually.

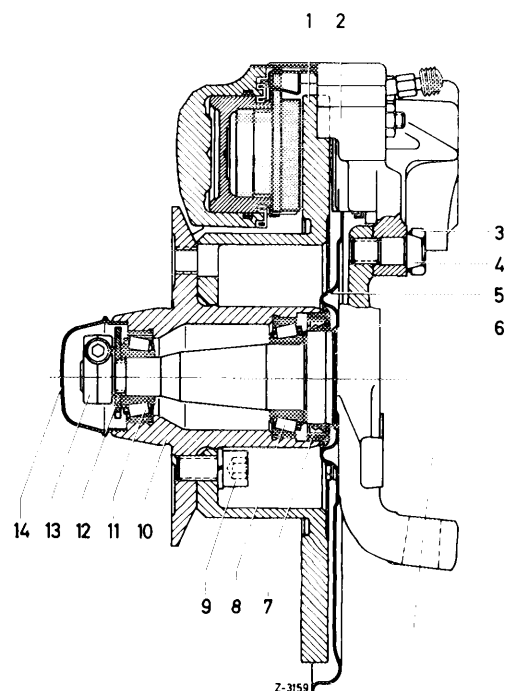
If cracks are larger (not measurable), with score marks deeper than 0.5 mm and at end of wear limit, renew brake discs.



### Removal

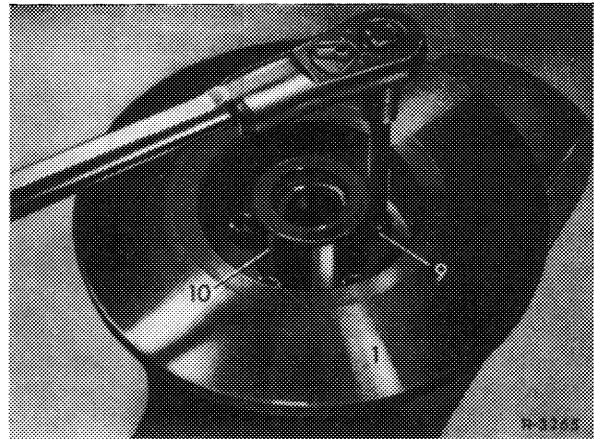
- 1 Remove caliper (42–100).
- 2 Remove front wheel hub (33–310).

- 1 Brake disc
- 2 Caliper
- 3 Hex. head fitted screw
- 4 Locking plate
- 5 Cover plate
- 6 Steering knuckle
- 7 Radial sealing ring
- 8 Tapered roller bearing
- 9 Self-locking hex. socket screw
- 10 Front wheel hub
- 11 Tapered roller bearing
- 12 Disc
- 13 Clamping nut
- 14 Hub cap



3 Screw three hex. screws M 12 x 1.5 into front wheel hub. Then clamp front wheel hub into a vise using aluminum jaws.

4 Unscrew self-locking hex. socket screws (9) by means of which the brake disc (1) is attached to front wheel hub (10).



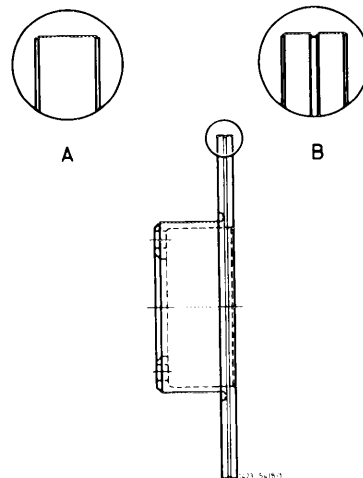
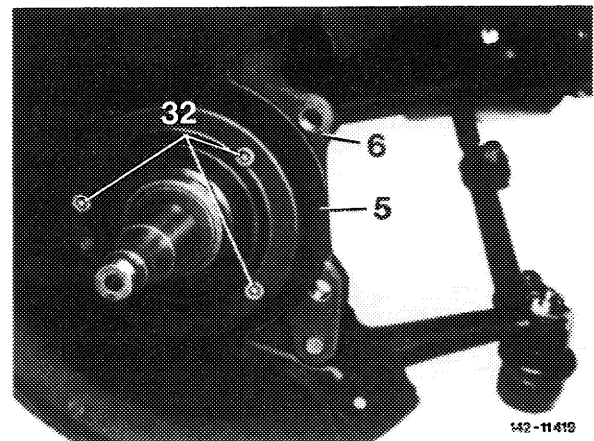
## Installation

**Note:** Prior to installation of brake disc, remove rust, if any, on flange of brake disc and front wheel hub. Make sure that there is no burr at fitting point of brake disc.

Check cover plate. Tighten hex. bolts (32), if required.

Replacement brake discs are protected against corrosion by means of nitro-cellulose paint. Prior to installation, these brake discs must be cleaned with a solvent. Make sure that safety rules are observed.

Also make sure that a brake disc of the respective version is installed. For identification, the disc having 273 mm dia. is identified by means of a groove on circumference.



Left:  
Brake disc of 278 mm dia.

Right:  
Brake disc of 273 mm dia.

5 Attach brake disc (1) to front wheel hub (10) with new self-locking hex. socket screws (9).

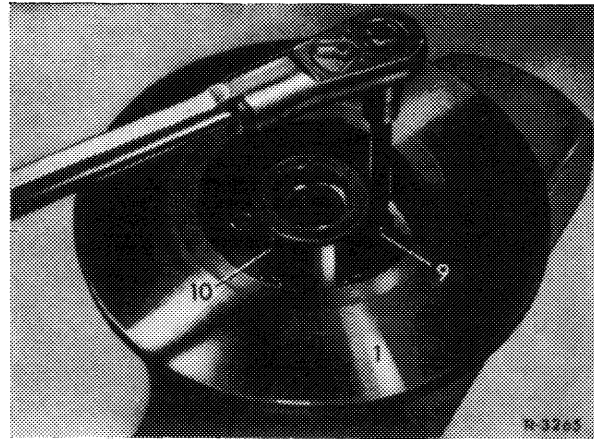
Tighten self-locking hex. socket screws to 115 Nm (11.5 kpm).

Instead of hex. socket screws with non-detachable snap ring, part no. 000 990 37 12 hex. socket screws with micro-encapsulated threads, part no. 000 990 72 12 can also be used.

**Note:** Self-locking hex. socket screws may be used only once.

6 Install front wheel hub (33–310).

7 Install caliper (42–100).



**Attention!**

**Prior to moving off, actuate brake pedal several times energetically** to obtain the correct clearance between brake disc and brake pad. Then top up brake fluid supply in expansion tank of tandem main cylinder.

**Note:** If during a trial run (mainly driving around a bend) a varying pedal travel is observed, measure lateral runout of brake disc at OD. Simultaneously, check wheel bearing end play of front wheel hub and adjust, if required (33–300).

If the lateral runout of the brake disc is too high, displace brake disc on front wheel hub. Renew brake disc, if required.

