

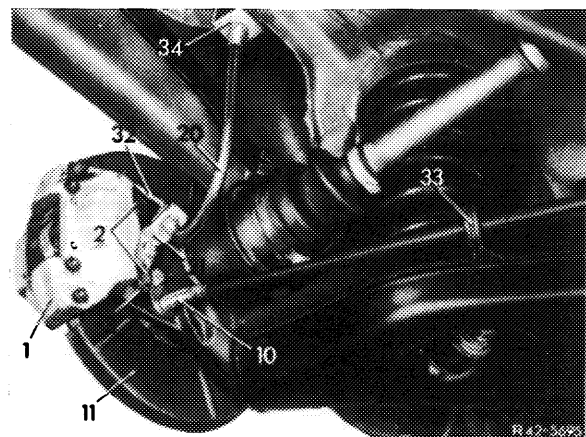
**Note**

Instead of the brake line with wire coil installed on semitrailing arm, the brake line can be installed from tandem master cylinder above rear axle. This line layout is produced in series since September 1970.

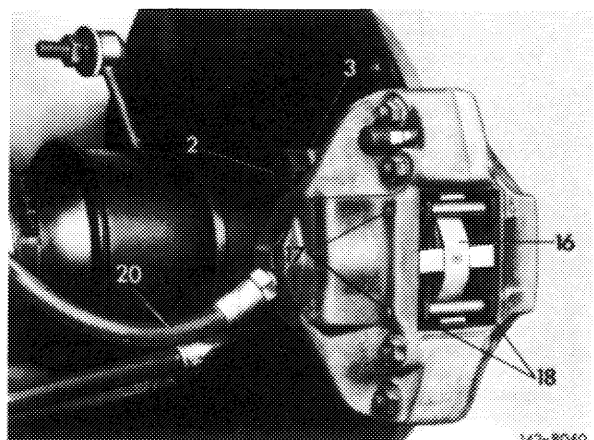
- 1 Mark fastening point (A) for brake hose holder (1) and (2) and weld holder to frame floor (42-125/2).
- 2 Mark hole for distributor (3), drill and attach distributor to frame floor (42-125/2).

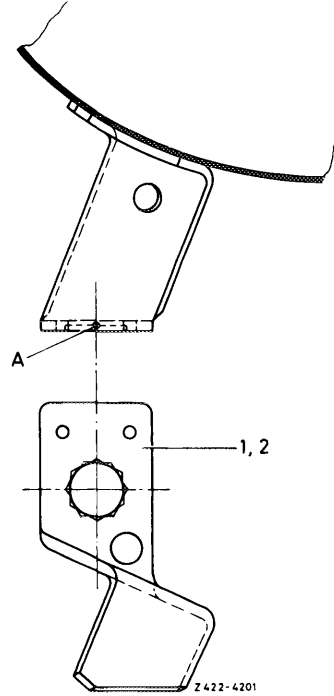
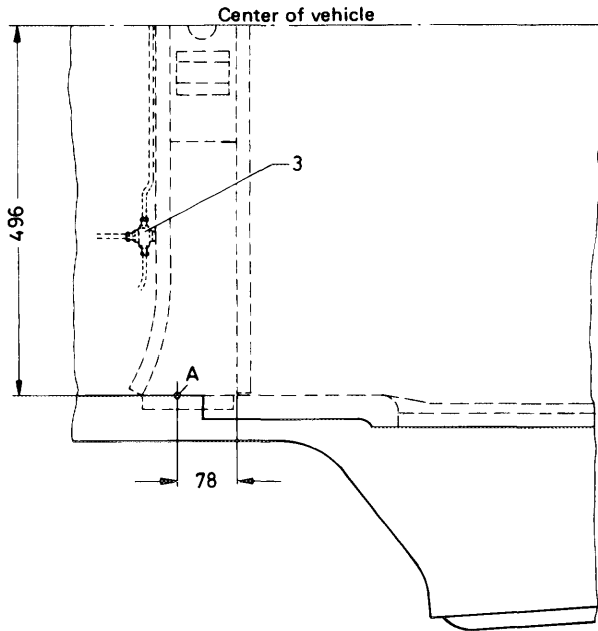
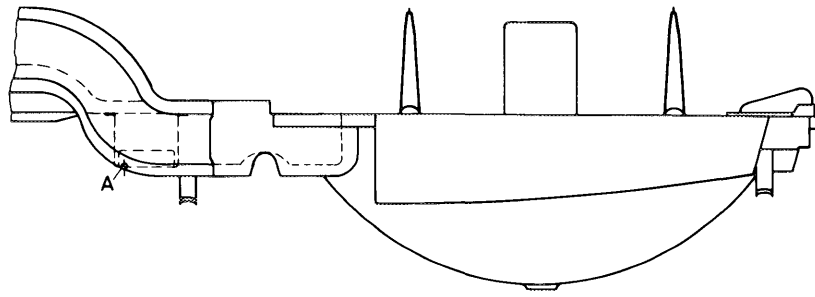
- 3 Install brake lines and brake hoses.

**Note:** a) If the existing calipers will be used again, install the locking plates together with the brake hose holders (21) and brake lines (32). Also use brake hose (20) with part no. 116 428 01 35.

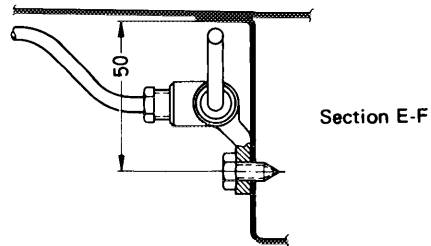
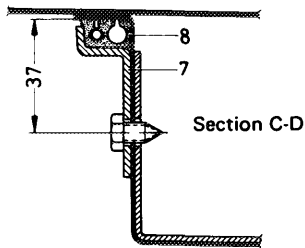
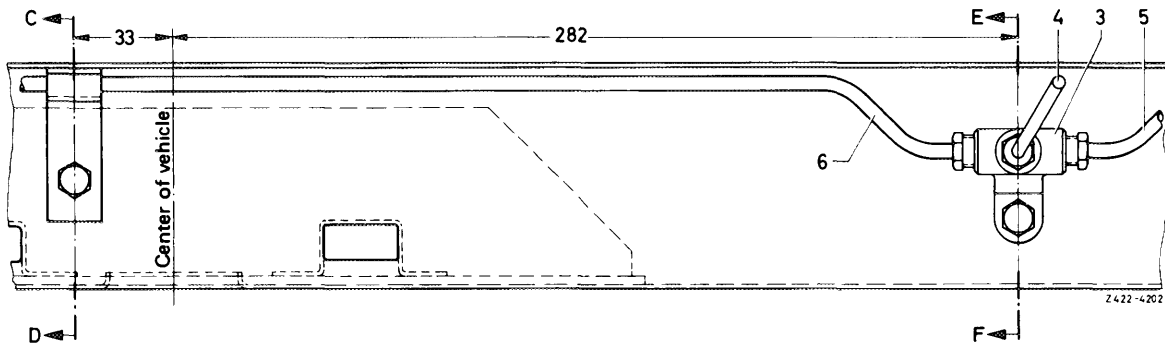


b) If calipers with direct connection of brake hose (20) are installed, use brake hose part no. 123 428 01 35.





- A Fastening point for brake hose holder
- 1 Brake hose holder left
- 2 Brake hose holder right



- 3 Distributor
- 4 Brake line
- 5 Brake line left
- 6 Brake line right
- 7 Fastening clip
- 8 Rubber slide

The following parts are required for conversion:

Item	Each	Designation	Part No.	Remarks
1	1	Brake hose holder left (frame floor)	115 611 03 14	
2	1	Brake hose holder right (frame floor)	115 611 04 14	
3	1	Distributor	000 428 42 24	
	1	Sheet metal screw B 6.3 x 16 DIN 7976	007976006204	
4	1	Brake line	115 420 20 28 LL	
	1	Brake line <sup>1)</sup>	115 420 21 28 LL	
4	1	Brake line	115 420 22 28 RL	
	1	Brake line <sup>1)</sup>	115 420 23 28 RL	
5	1	Brake line left	115 420 24 28	
6	1	Brake line right	115 420 25 28	
7	1	Fastening clip	115 428 00 41	
8	1	Rubber slide	111 476 00 81	
	1	Sheet metal screw B 6.3 x 13 DIN 7976	007976006203	
	3	Rubber slide	110 476 00 84	
20	2	Brake hose	116 428 01 35	refer to fig. item 3 note "a"
20	2	Brake hose	123 428 01 35	refer to fig. item 3 note "b"
21	1	Brake line left	115 420 18 28	
21	1	Brake line right	115 420 19 28	
32	1	Brake hose holder left	115 428 17 40	
32	1	Brake hose holder right	115 428 18 40	
	2	Locking plate	115 423 02 73	
	1	Screw M 6 x 10 DIN 933-88	000933006074	
	1	Spring washer B 6 DIN 137	000137006203	

<sup>1)</sup> Brake line for vehicles with long wheel base

LL = lefthand steering

RL = righthand steering

Responsible for delivery: Item 1 and 2 ET Sindelfingen  
Item 3 to 32 ET Esslingen-Mettingen