

Production Cut-off Information

The first version of the Seat Belt Warning System has been installed as of the following Chassis End No.:

Model	Chassis Type	Chassis End No.
350 SL	107.044	002249
450 SL	107.044	(From start of
450 SLC	107.024	model year 1973)

General Description

The system will operate if the ignition switch is in the "ON" position and the transmission shift lever is in any driving position except "PARK" or "NEUTRAL" (with automatic transmission), and if the driver's seat belt (lap harness only) is not fastened.

The warning system will continue to operate until the driver's seat belt is fastened (or pulled out approximately 4"). If a passenger is occupying the right front seat, even though the driver's seat belt is fastened, the warning system will operate until the front passenger seat belt (lap harness) is also fastened (or pulled out approximately 4"). The seat belt warning system will only be activated if the weight on the front passenger seat is at least 47 lbs.

NOTE:

The seat belt switches are built into the seat belt retractors located on the outer side member of the vehicle behind each front seat. When pulling out the lap belt, it must be pulled far enough in *one continuous* movement to reach across the seat and can be fastened in the lock. It will then be partially retracted, whereby the contacts of the seat belt switch are opened and deactivate the warning system. The belt will then be locked in this position. To increase belt length, let belt be pulled back into the retractor, then pull out again and fasten.

54.1 Seat Belt Warning System—1st Version

Electrical Wiring Diagram

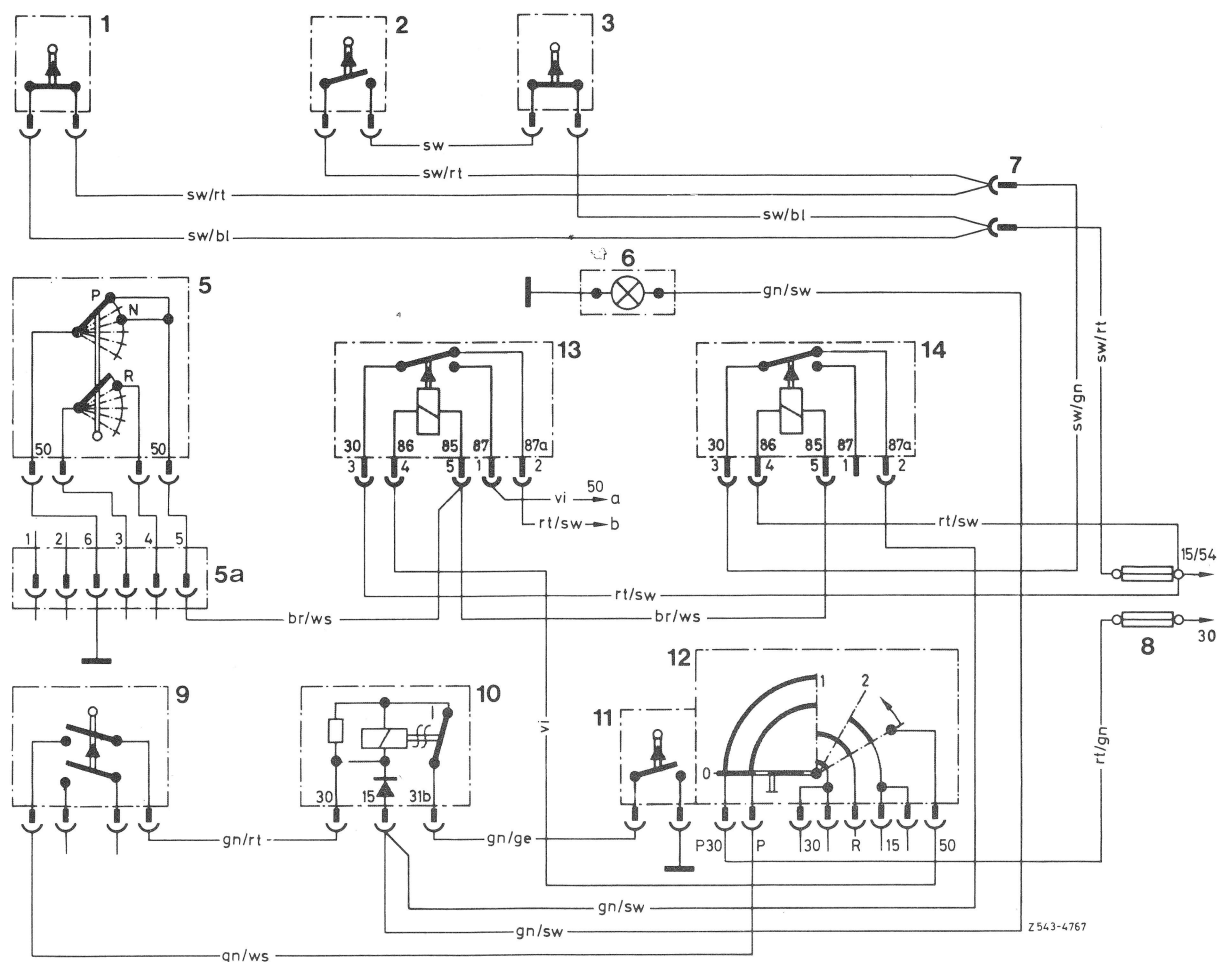


Fig. 1 Wiring Diagram for Seat Belt Warning System
Models 350 SL, 450 SL, 450 SLC

- 1 Seat belt retractor switch, driver seat
- 2 Seat sensor switch, passenger seat
- 3 Seat belt retractor switch, right side
- 5 Starter lock-out and back-up light switch
- 5a Connector
 - 1 & 2 = terminals for kick-down switch
 - 3 & 4 = terminals for back-up lights
 - 5 & 6 = terminals for starter lock-out switch
- 6 Warning light, Fasten Seat Belts
- 7 Terminals or 2-prong plug behind center console
- 8 Fuses, main fuse box
- 9 Door contact switch, left side
- 10 Warning buzzer
- 11 Warning buzzer switch, ignition switch
- 12 Ignition switch
- 13 Relay, air conditioner/starter
- 14 Relay, warning buzzer

a to terminal 50 on starter
b to fuse box, air conditioning

WIRE COLOR CODE

bl = blue
br = brown
ge = yellow
gn = green

rt = red
sw = black
vi = violet
ws = white

Operation of the System

All Models with Automatic Transmission

With the ignition in "ON" position and the seat belts not fastened, the seat belt switches (1 and 3) in the retractor are closed, so that current is available at terminal 30 of the warning buzzer relay (14) and on the seat sensor switch (2) in the passenger seat.

With the transmission selector lever in "P" or "N", terminal 85 of the air conditioner/starter relay (13) is connected to ground via terminal 50 of the starter lock-out and back-up light switch (5) so that the starter can be operated. The same ground connection is used for the warning buzzer relay (14); by connecting its terminal 85 to ground, the relay is energized, interrupting the power to the warning light and buzzer.

If the transmission selector lever is placed into a driving position or reverse, the ground connection to relays 13 and 14 (terminal 85) will be interrupted by the starter lock-out and back-up light switch (5) so that both relays are in rest position and thereby connecting power from terminal 87a of the warning buzzer relay (14) to the warning buzzer (10) as well as to the warning light (6) which is connected parallel to the buzzer. The warning buzzer (10) is connected to ground via the warning buzzer switch (11) in the ignition lock, whereas the warning light (6) has its own ground.

Fastening the lap belts (or pulling them out by more than 4") will open the contact of the seat belt switch in the retractor and thereby interrupting the power supply to terminal 30 of the warning buzzer relay (14), which cuts off the entire seat belt warning system.

NOTE:

In case the front passenger seat is occupied, the contact of the seat sensor switch (2) will be closed. This will, since the seat sensor switch (2) and the seat belt switch in the retractor are wired in series, supply power to the seat belt warning system unless the seat belt for the front passenger seat is fastened.

IMPORTANT:

The air conditioner/starter relay (13) is wired in such a way that the power supply to the air conditioning system is cut off while operating the starter.

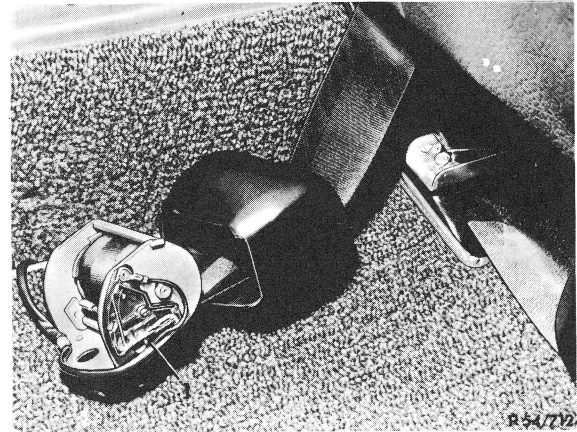
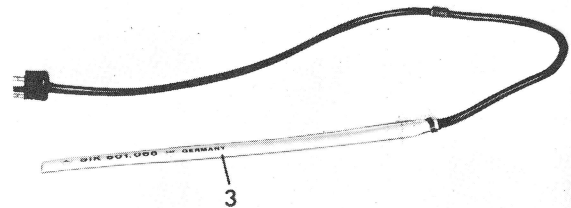
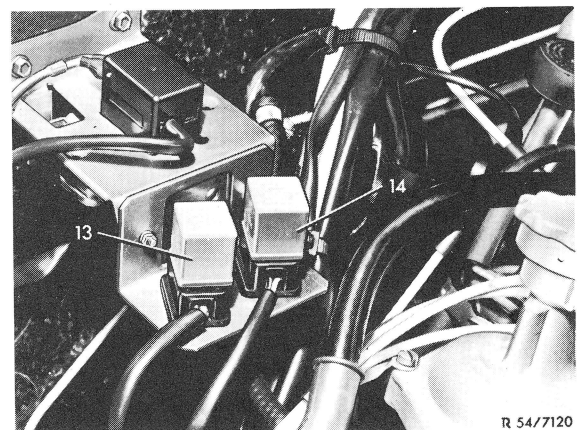


Fig. 4
1 Seat belt switch in retractor



R 54/7205

Fig. 5
3 Seat sensor switch in passenger seat



R 54/7120

Fig. 6
13 Relay, air conditioner/starter
Code No. 4
14 Relay, warning buzzer
Code No. 7

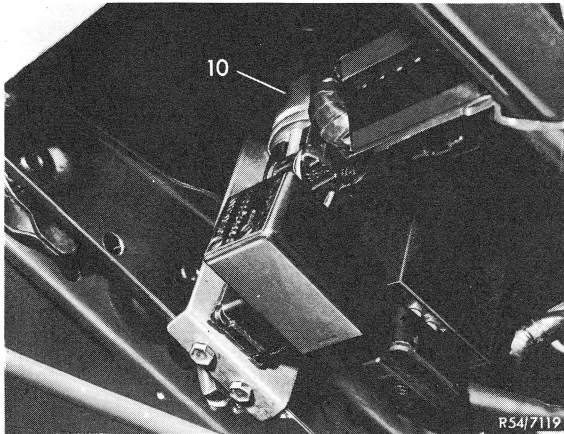


Fig. 7
10 Warning buzzer

CAUTION:

It has been found on some cars that relays 13 and/or 14 were not located in the exact place as shown in Fig. 6. Usually, however, they are located adjacent to it. This can easily be determined by the color coding of the wires.