

## Removal

- 1 Remove exhaust system (49.1–100).
- 2 Disconnect restoring spring on holder (2) (Fig. 1).

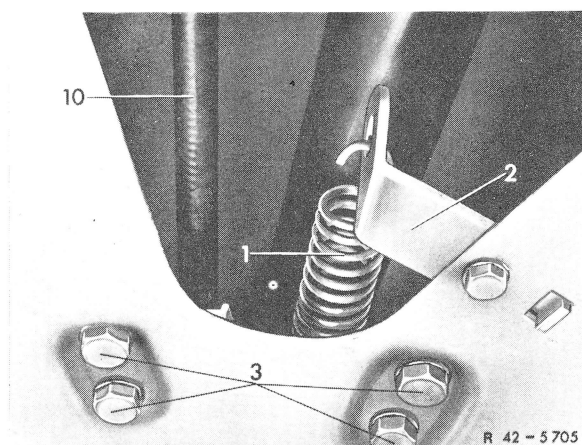


Fig. 1

- |                    |                        |
|--------------------|------------------------|
| 1 Restoring spring | 3 Hex. bolt            |
| 2 Holder           | 10 Brake cable control |

- 3 Unscrew adjusting screw (3) on adjusting bracket (1) (Fig. 2).

- 4 Turn steering completely toward the left and unscrew hex. nut (20) in lefthand wheel house (Fig. 3).

- 5 Remove windshield wiper motor (82.1–610).

- 6 Unscrew hex. nut (21) on front end (Fig. 3).

- 7 Unscrew cover underneath instrument panel in legroom (3) and pull downwards. Remove legroom light (4), remove plug and pull cable out of cover (Fig. 4 and 5).

- 8 Unscrew actuating button (9) for manual release, then remove stop buffer (8) (Fig. 3).

- 9 Disconnect brake cable control (17) from pulling plate of parking brake. Remove spring clamp (19) and take-off brake cable control (Fig. 3 and 6).

- 10 Remove cable assembly from cable belt.

- 11 Loosen plug connection on switch (2) for parking brake warning light (Fig. 6).

- 12 Unscrew hex. bolt (13) from cross beam (12) and remove complete parking brake with connecting piece (22) (Fig. 3).

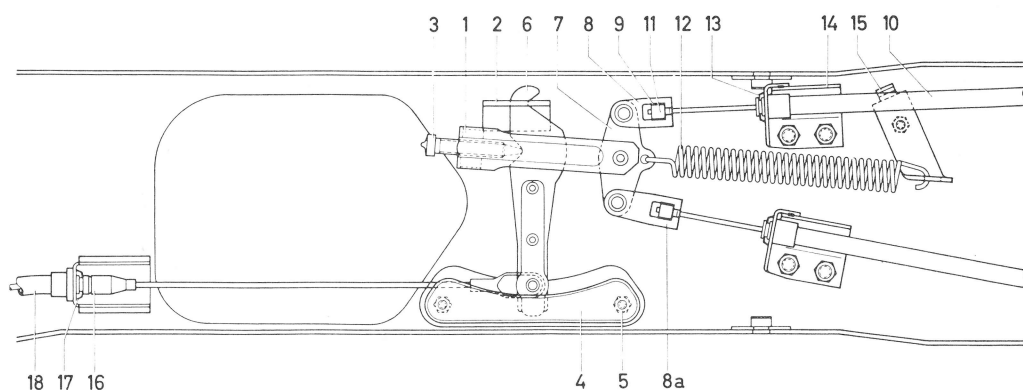


Fig. 2

- |                                |                             |  |                              |
|--------------------------------|-----------------------------|--|------------------------------|
| 1 Adjusting bracket            | 7 Compensating lever        | 12 Draw spring                         | 15 Holder for draw spring    |
| 2 Bearing on chassis floor     | 8 Cable control plate       | 13 Spring clamp                        | 16 Rubber sleeve             |
| 3 Adjusting screw              | 8a Cable control plate      | 14 Holder for rear brake cable control | 17 Spring clamp              |
| 4 Guide for intermediate lever | 9 Hose member               |  | 18 Front brake cable control |
| 5 Hex. bolt                    | 10 Rear brake cable control |  |                              |
| 6 Intermediate lever           | 11 Adapter                  |  |                              |

# 42.1 Removal and Installation of Pedal Assembly of Parking Brake

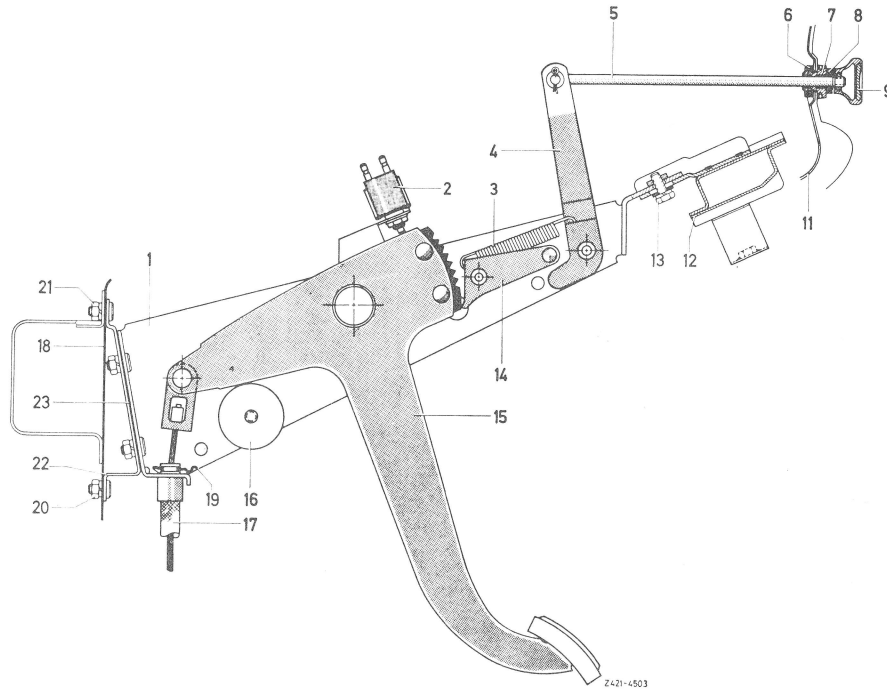


Fig. 3

- |                            |   |                        |                           |
|----------------------------|---|------------------------|---------------------------|
| 1 Carrier                  | 8 Stop buffer                                     | 14 Latch               | 20 Hex. nut and snap ring |
| 2 Switch for warning light | 9 Actuating button                                | 15 Pedal               | 21 Hex. nut and snap ring |
| 3 Restoring spring         | 11 Instrument panel                               | 16 Stop buffer         | 22 Connecting piece       |
| 4 Release lever            | 12 Cross member                                   | 17 Brake cable control | 23 Sealing shim           |
| 5 Pull rod                 | 13 Hexagon socket screw with washer and snap ring | 18 Front end           |                           |
| 6 Nut on rosette           |   | 19 Spring clamp        |                           |
| 7 Rosette                  |   |                        |                           |

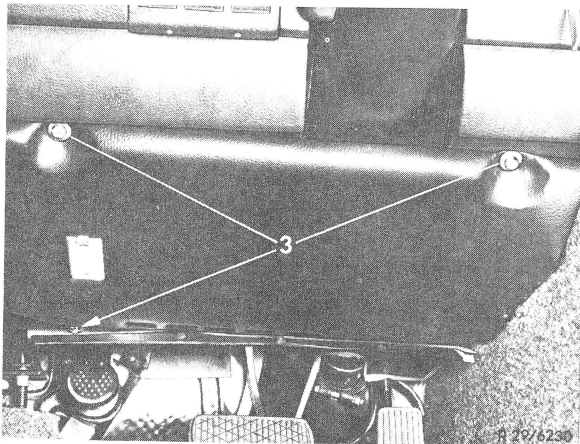


Fig. 4

- 3 Fastening bolts

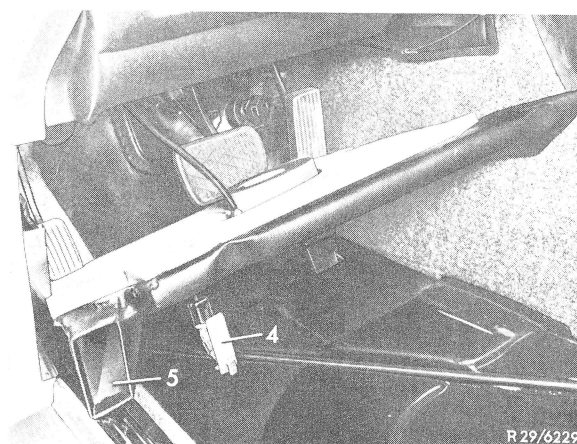


Fig. 5

- 4 Legroom light      5 Slot for door ventilation

## Installation

**13** Attach parking brake in lefthand wheel house, on front end and on cross member underneath instrument panel, inserting linkage for manual release into bore of instrument panel (Fig. 3).

**14** Install windshield wiper motor (82.1—610).

**15** Attach brake cable control (17) into pulling plate on pedal and install spring clamp (19) in cable guide (Fig. 3 and 6).

**16** Attach plug connection to switch for warning light. Check warning light for function.

- 17** Attach cable assembly with cable belt to parking brake.
- 18** Insert stop buffer (8) into groove of pull rod (5) and screw actuating button (9) for manual release to linkage (Fig. 3).
- 19** Pull cable for legroom light through cover, attach plug and push legroom light (4) into cover (Fig. 5).
- 20** Introduce legroom cover and screw down (Fig. 4).
- 21** Attach restoring spring (1) to holder (2) (Fig. 1).
- 22** Adjust parking brake (42.1—540).
- 23** Install exhaust system (49.1—100).

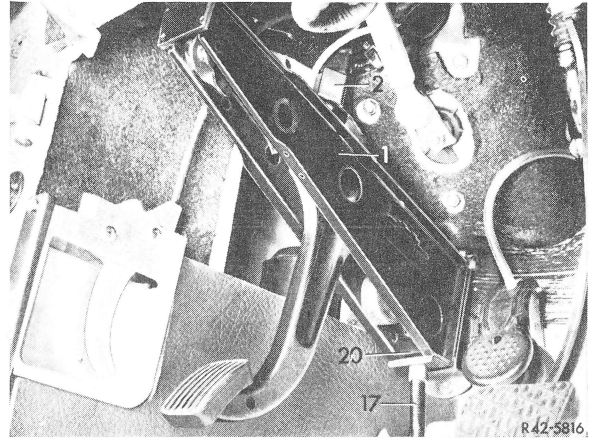


Fig. 6

- |                            |                        |
|----------------------------|------------------------|
| 1 Carrier                  | 17 Brake cable control |
| 2 Switch for warning light | 20 Spring clip         |