

Data

Cooling Water Operating Temperature	70–95° C
Cooling Water Temperature max.	115° C
Thermostat Element Opens at	75° C

Removal

- 1 Drain cooling water from radiator and cylinder crankcase (20.1–010).
- 2 Unscrew housing cover (1) and remove thermostat element (3) (Fig. 1).

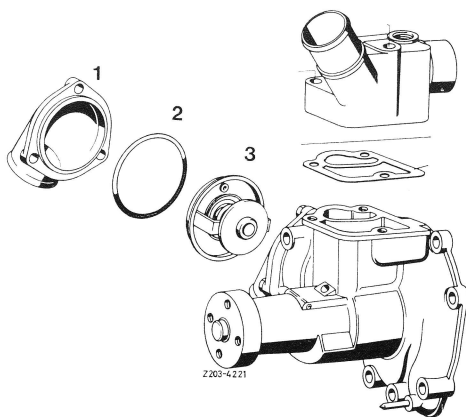


Fig. 1

- 1 Housing cover
- 2 Sealing ring
- 3 Thermostat element

Note: Engine 116.981 requires the additional jobs of disconnecting the battery, as well as removing the air cleaner and the alternator.

Installation

- 3 Install cooling water thermostat with a new sealing ring (2) in such a manner that the ball valve is on top (arrow in Fig. 2).

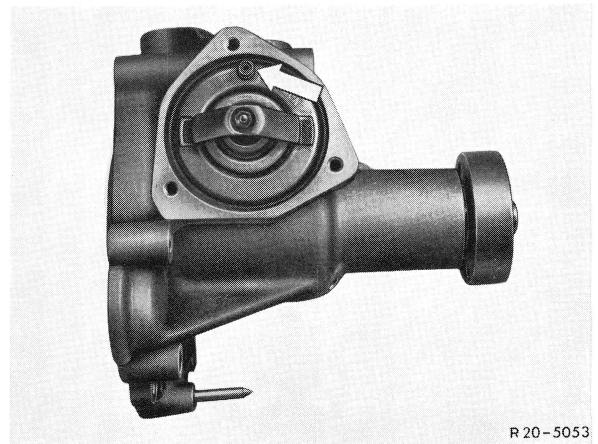


Fig. 2

- 4 Fill up with cooling water (20.1–020).