

Adjusting Values

Length of push rod (33) (measured from center of rubber mount to center of ball socket)	104
Vehicles with manual transmission and gate shift lever	
Length of connecting rod (31) 1st version	90
2nd version with bore adjacent to ball head	107
Vehicles with automatic transmission without gate shift lever	
Length of connecting rod (11)	69
Length of connecting rod (31)	114
Vehicles with automatic transmission with gate shift lever	
Length of connecting rod (31)	107

Adjustment

- 1 Check regulating linkage for easy operation and distortion. Replace ball heads and linkage, if required.
- 2 Disconnect all regulating rods.

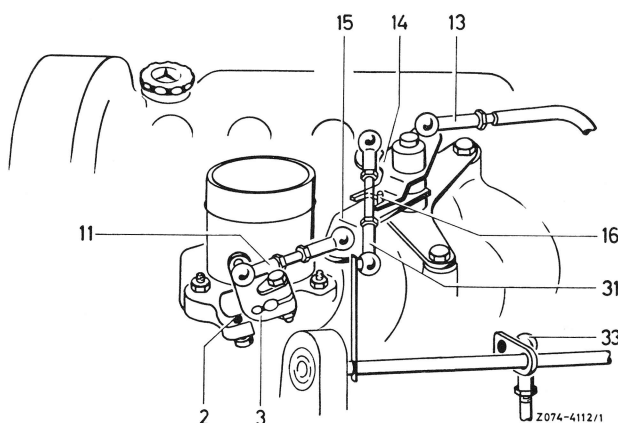


Fig. 1

- | | |
|------------------------|---------------------|
| 2 Idling speed stop | 15 Regulating lever |
| 3 Throttle valve lever | 16 Stop pin |
| 11 Connecting rod | 31 Connecting rod |
| 13 Control push rod | 33 Push rod |
| 14 Regulating lever | |

- 3 Check whether throttle valve closes completely without binding.

- 4 Adjust push rod (33) to a length of 104 mm from center of rubber mount to center of ball socket and attach (Fig. 1).

Vehicles with Manual Transmission

- 5 Adjust connecting rod (31) to a length of 90 mm or 107 mm for gate shift lever with bore next to ball head and attach (Fig. 1).

Push throttle valve lever (3) against idling speed stop (2). Adjust connecting rod (11) in such a manner that the regulating lever (10) rests with roller (7) against the end stop of the gate shift lever (9) (Fig. 2).

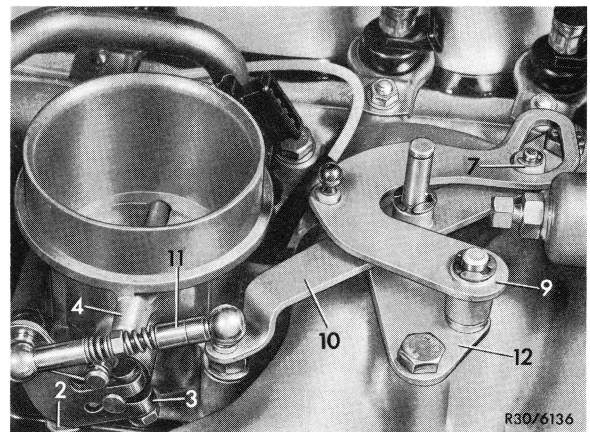


Fig. 2

- | | |
|------------------------|---------------------|
| 2 Idling speed stop | 9 Gate shift lever |
| 3 Throttle valve lever | 10 Regulating lever |
| 4 Full throttle stop | 11 Connecting rod |
| 7 Roller | 12 Bearing bracket |

07.4.1 Adjustment of Regulating Linkage

Vehicles with Automatic Transmission

a) Version without gate shift lever (Fig. 3)

6 Adjust connecting rod (31) to a length of 114 mm, connecting rod (11) to 69 mm and attach (Fig. 1).

Push throttle valve lever to idling speed stop and regulating lever (14) toward the rear up to stopping pin (16) (Fig. 3).

Push control push rod (13) completely toward the rear against stop and adjust for tension-free length toward ball head of regulating lever (14) and attach.

During the **length control** of the control push rod **the ball socket must be held next to and not above** the ball head because of the circular motion of the linkage.

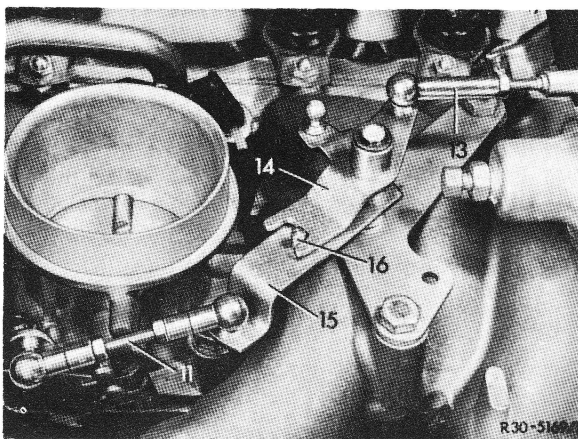


Fig. 3

- | | |
|---------------------|---------------------|
| 11 Connecting rod | 15 Regulating lever |
| 13 Control push rod | 16 Stop pin |
| 14 Regulating lever | |

b) Version with gate shift lever (Fig. 4)

7 Adjust connecting rod (31) to a length of 107 mm and attach.

Push throttle valve lever against idling speed stop. Adjust connecting rod (11) in such a manner that the regulating lever (17) rests with roller (7) against the end stop of the gate shift lever (19) (Fig. 4). Push regulating lever (20) toward the rear against stopping pin (18).

Push control push rod (13) completely toward the rear against the stop and adjust for tension-free length toward ball head of regulating lever (20) and attach.

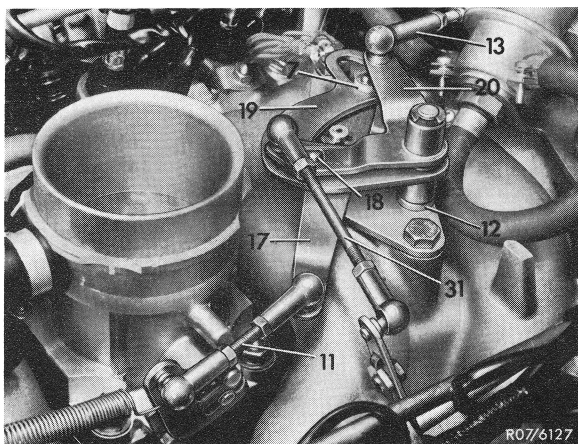


Fig. 4

- | | |
|---------------------|---------------------|
| 7 Roller | 18 Stopping pin |
| 11 Connecting rod | 19 Gate shift lever |
| 12 Bearing bracket | 20 Regulating lever |
| 13 Control push rod | 31 Connecting rod |
| 17 Regulating lever | |

During the **length control** of the control push rod **the ball socket must be held next to and not above** the ball head because of the circular motion of the linkage.

8 Step on accelerator pedal from inside vehicle, on vehicles with manual transmission the accelerator pedal should rest against the full throttle stop and on vehicles with automatic transmission against the kick-down stop.

In this position, the throttle valve lever should rest against the full throttle stop of the valve connection.

Adjust regulating shaft above accelerator pedal after loosening hex. bolt (arrow), if required.

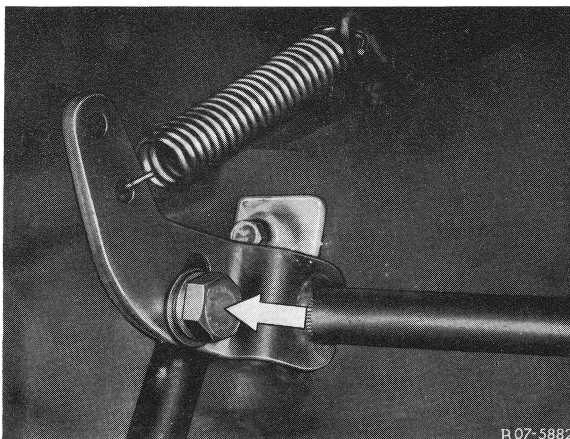


Fig. 5