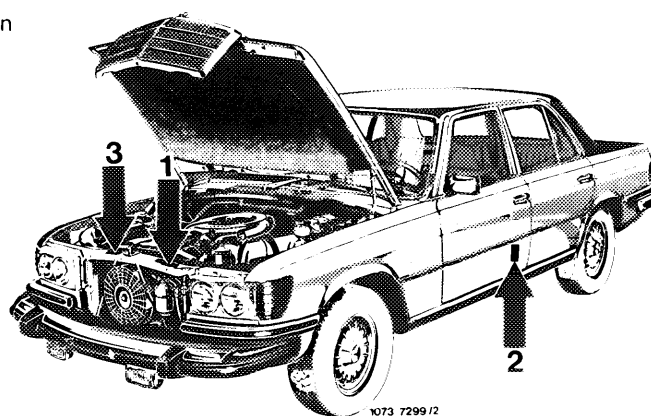


The various emission control systems of USA version vehicles are identified by respective information plates (arrows 1, 2 and 3).



1. Information plate on cross member in front of radiator

This plate shows the identification data as well as all the important engine adjustment data.

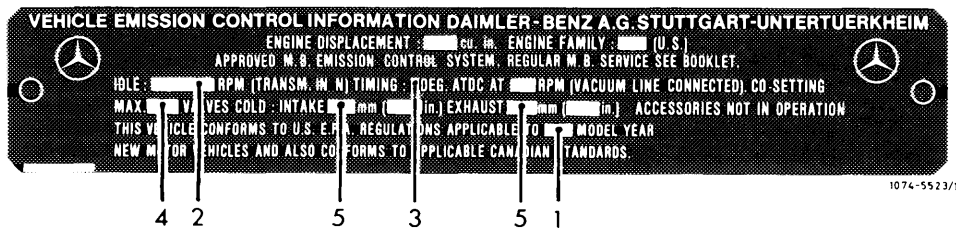
Recognizing emission control system from color of information plate – basic color/lettering

Model year	Federal version	California version	Federal version high altitudes	Federal version tourist vehicles	California version tourist vehicles	
1971	black/silver		—	—	—	
1972			black/silver	—	—	—
1973				—	—	—
1974				—	—	—
1975	black/silver	green/silver	—	yellow/silver	yellow/silver	
1976			—			
1977	black/white	yellow/black	red/black	black/white	yellow/black	
1978			—			
1979			—			
1980		black/white	—			black/white

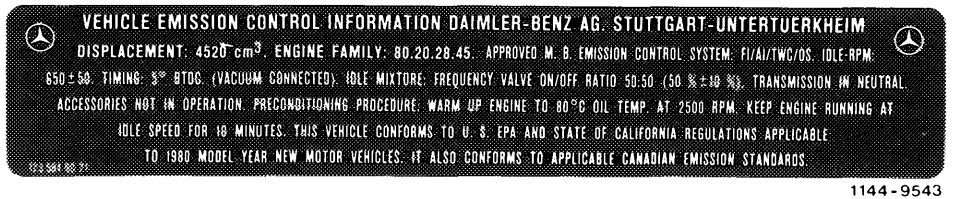
The information plate shows:

1. MODEL YEAR
2. IDLE . . . RPM
3. TIMING . . . DEG. AT . . . RPM
4. Emission value at idle without air injection max . . .
CO—SETTING MAX. . . . AIR INJECTION DISCONNECTED
5. Valve clearance: INTAKE (. . . in)
EXHAUST (. . . in)

Information plate up to model year 1979

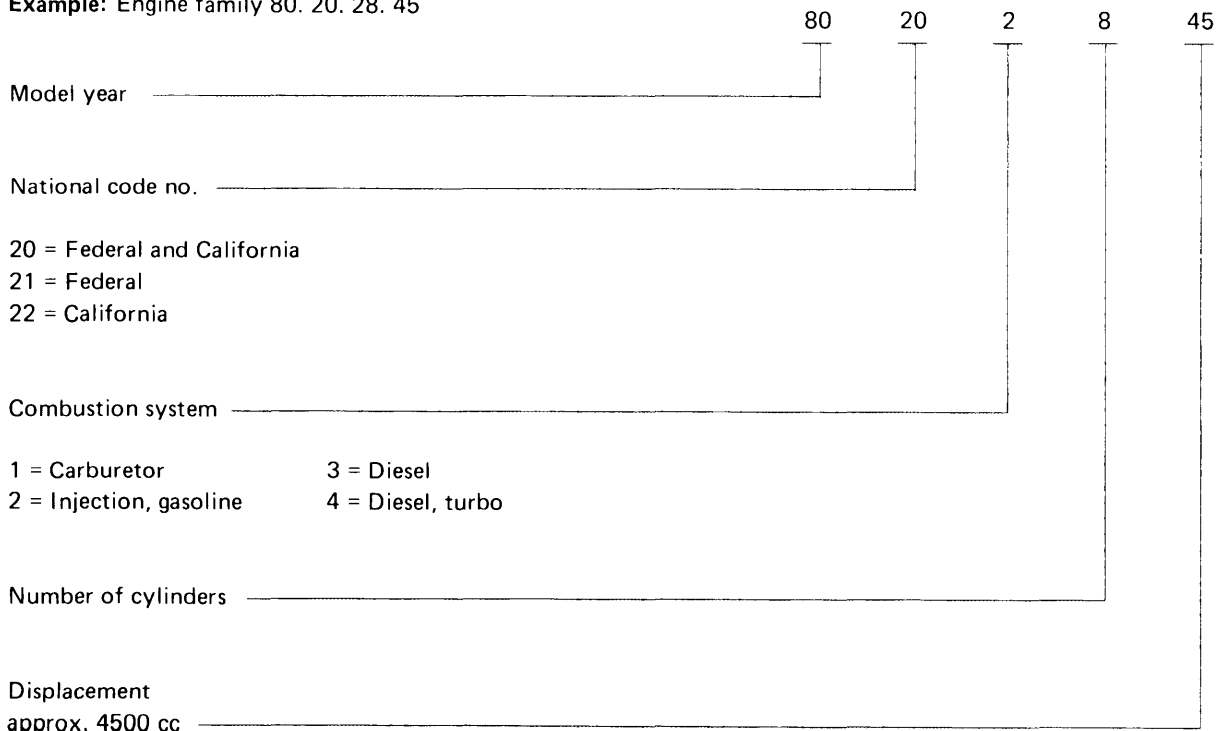


Information plate model year 1980



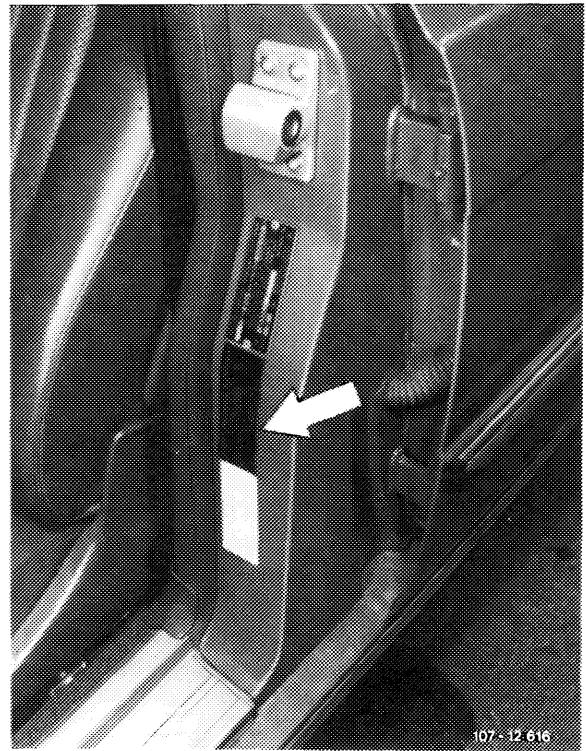
Identification data are encoded in an 8-digit code no.

Example: Engine family 80. 20. 28. 45



2. Information plate on door pillar of driver's door

This plate shows whether vehicle is provided with catalysts or not.



Recognizing catalysts from color of information plate — basic color/lettering

Model year	Federal version	California version	Federal version high altitudes	Federal version tourist vehicles	California version tourist vehicles	
1976	black/silver	black/silver	—	red/silver	red/silver	
1977		green/silver	black/silver		blue/silver	
1978		black/silver	—		red/silver	red/silver
1979			—			

Information plates

This vehicle is provided with catalysts.



1074 - 8259

Tourist vehicles

This vehicle is not provided with catalyts by manufacturer.

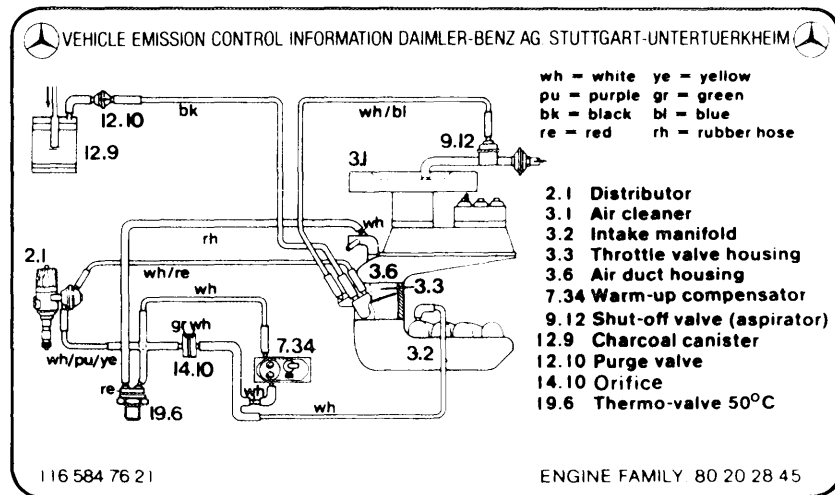
Catalysts must be installed prior to import into USA.



1074 - 8260

3. Information plate for vacuum line installation located on cross member in front of radiator (California only)

This plate shows the vacuum line layout for all emission system components in engine compartment.



1144 - 9406