

Tightening torque

Nm

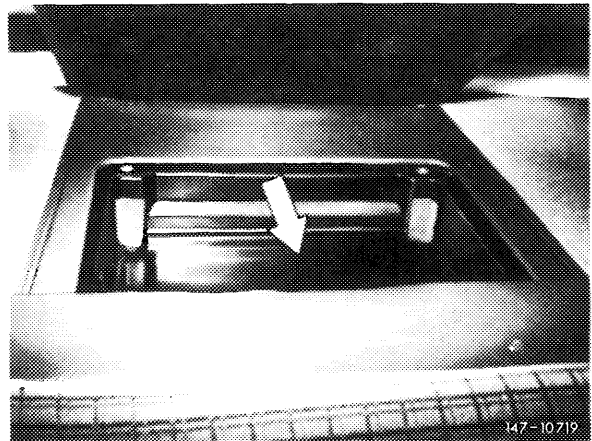
Immersion tube transmitter

35-43

Removal

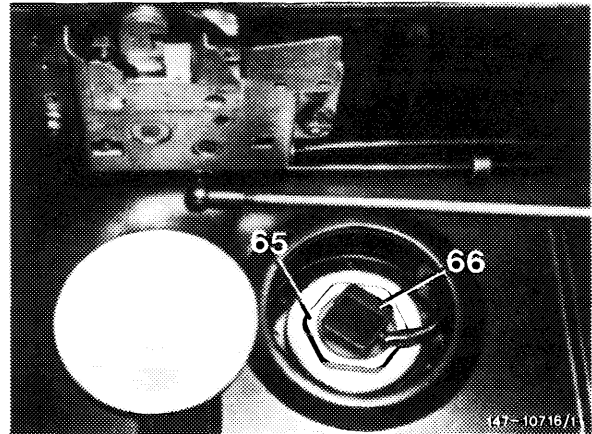
Model 107.02

- 1 Remove first aid kit and mounting tray (arrow).



Model 107.04

- Remove hard top, unfold top, remove closing cover.



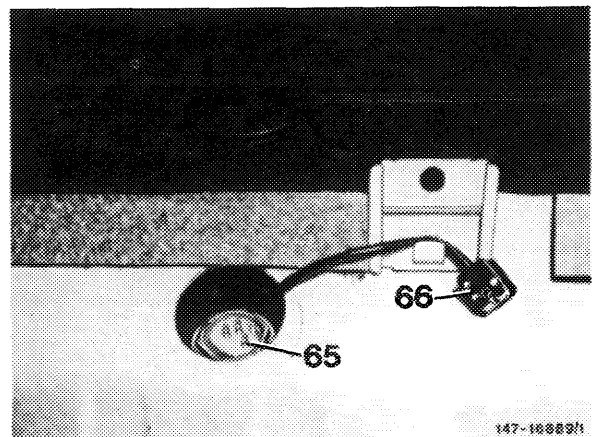
Model 126

- Take off rear seat bench and backrest (91-170), remove cap.

All models

- 2 Pull off coupling (66) and protect against slipping off.
- 3 Unscrew immersion tube transmitter (65).

Note: Let immersion tube transmitter run empty, if required.

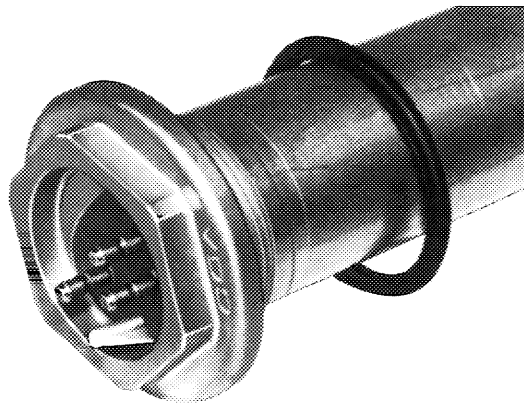


Installation

All models

4 For installation proceed vice versa as follows:

a) Use new rubber sealing ring.



147-10810

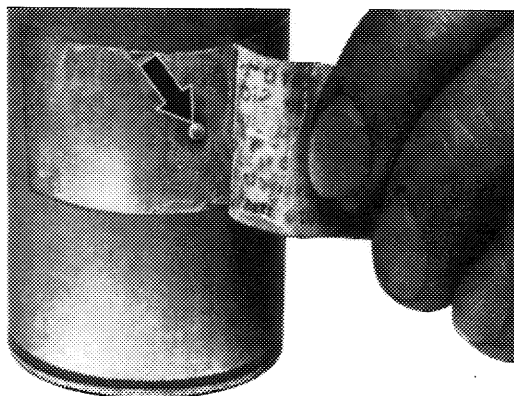
b) Remove locking pin (arrow) prior to installing immersion tube transmitter.

c) Check function of fuel gauge.

d) Tighten immersion tube transmitter to 35–43 Nm.

e) Plug on coupling for fuel gauge.

f) Check for leaks.



107-10702