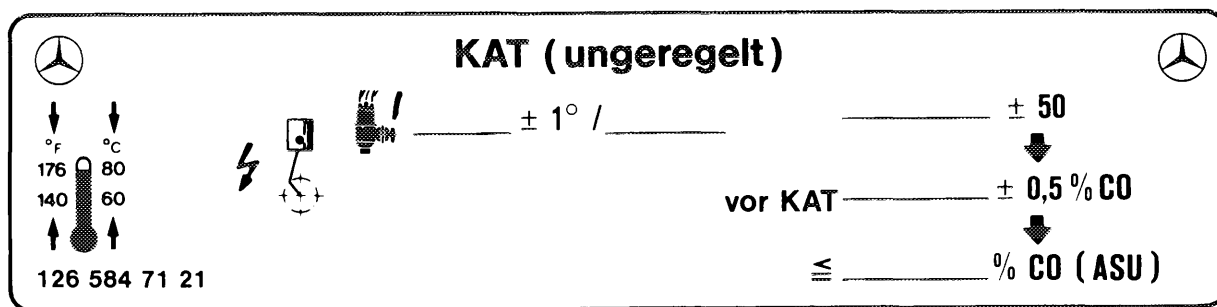


Standard KAT (open-loop)

Information label for engine data (KAT open-loop) is glued to the left of the upper front cross member. The engine settings should be entered in pen.



1004 - 13 867

NV KAT (closed-loop) starting July 1984

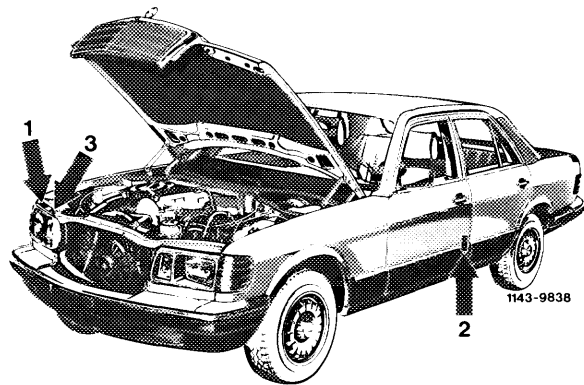
The vehicles basically conform to the national version (J) (USA). Variations from the basic version standard are:

- Low compression ($\epsilon = 8.3$)
- Output 120 kW (163 hp)
- CIS injection system with lambda control
- O₂ Sensor
- Electronic controller
- Frequency valve with pressure damper
- Air injection
- Fuel pump relay without decel fuel cutoff
- Electronically controlled idle speed
- Fuel evaporation control system

J

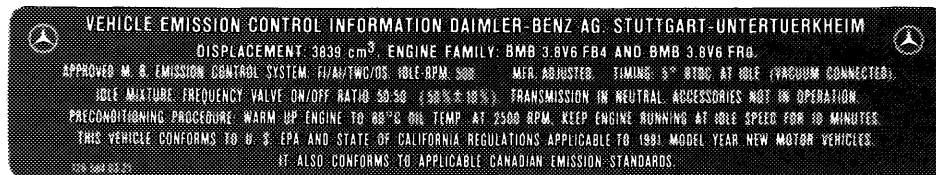
On Japan version vehicles an information label for the emission control system in the national language is attached in the engine compartment in Japan. This label contains the principle engine adjusting data.

USA black



Information label for emission control system on cross member in front of radiator (1)

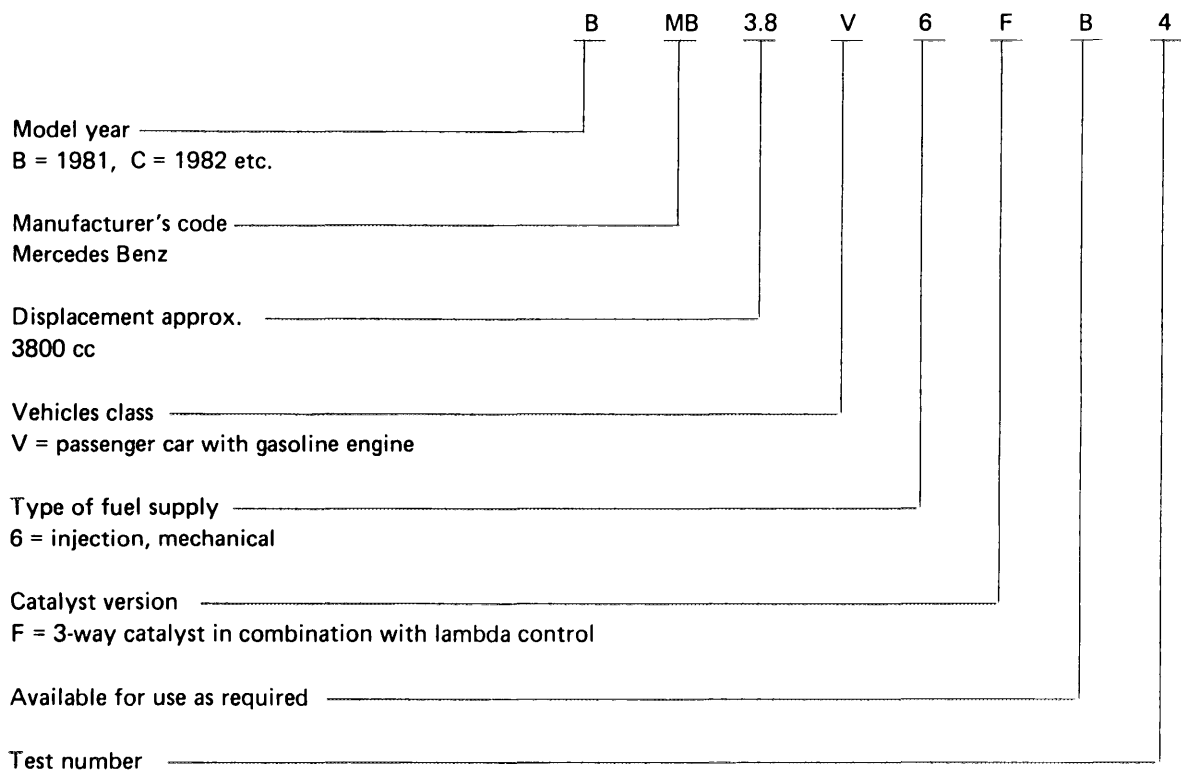
This label shows the engine identification data, as well as the most important engine adjusting data.



1144-9780

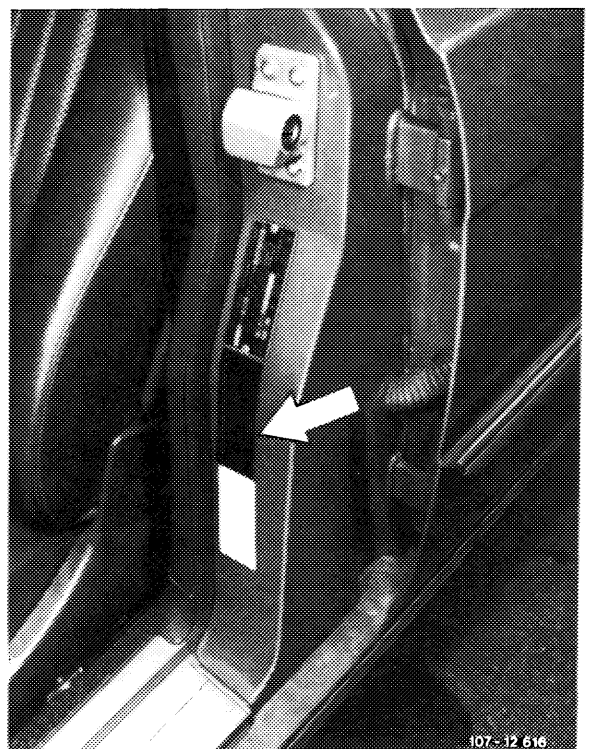
Engine identification data are encoded in a 10-digit code.

Example: Engine Family B MB 3.8 V 6 F B 4



Information label on door post of driver's door (2)

This label shows whether the vehicle is equipped with or without catalyts.



USA version

This vehicle is provided with catalyysts.

Color code of information label:
Basic color black, lettering silver.



1144 - 10036

Tourist version

Tourist version vehicles are not provided with catalysts by manufacturer.

Color code of information label:
Basic color red, lettering silver.



1144 - 10037

Catalysts must be installed prior to import into USA.