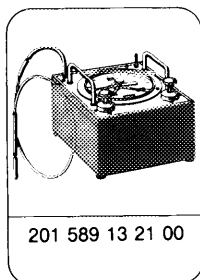


43-023 Inspection of check valve

Data

Test vacuum in bar	0.75-0.8
Duration of test	30 s
Pressure drop in bar vacuum	0.2

Special tool



Self-made tool

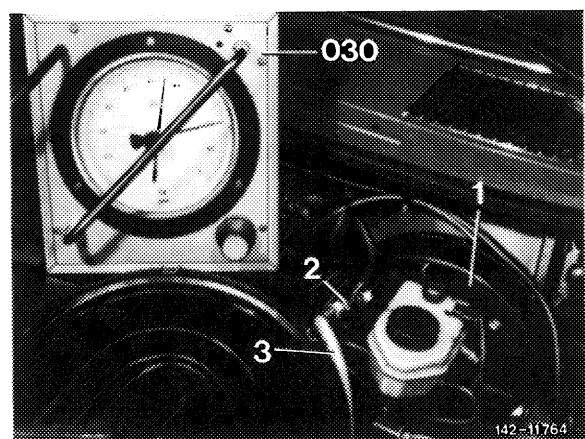
Measuring connection refer to Illustration item 2, note

Note

Inspect check valve in vacuum line for leaks each time the brake unit is renewed.

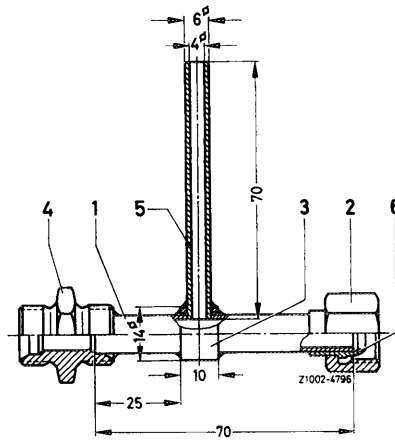
Checkup

- 1 Loosen vacuum line (3) on brake unit (1) and attach measuring connection (2) between brake unit and line.
- 2 Connect tester for vacuum (030) to measuring connection (2).



Note: The measuring connection is self-made according to specified dimensions (parts 1, 3, 4, 5 and 6 are brazed to each other). For connection to brake unit, the pipe member including the coupling nut of an old vacuum line may be used. Connection to vacuum line is made by means of a screw connection.

3 Run engine warm and establish a vacuum of 0.75–0.8 bar by accelerating and sudden release of accelerator pedal.



4 Inspect check valve for leaks. The available vacuum should drop by no more than 0.2 bar within 30 seconds. If the dropping vacuum is higher, replace check valve including vacuum line.

Note: Repeat leak test upon installation of a new vacuum line. If the pressure drop is still too high, the leak may be the result of damaged screw connections or a leaking brake unit.