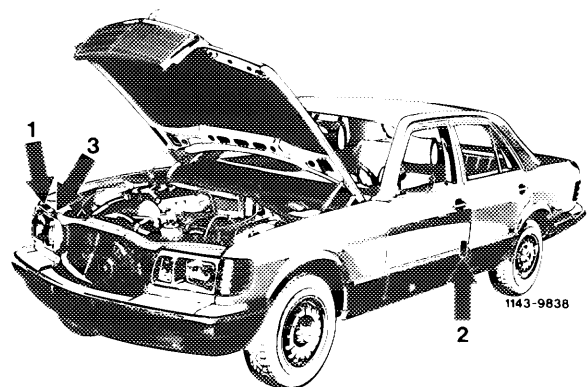
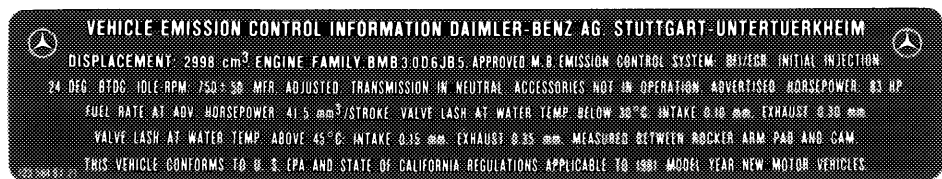


The vehicles delivered in California are identified by means of three identification labels, federal version vehicles with two.



Identification label for emission control system on cross member in front of radiator (1)

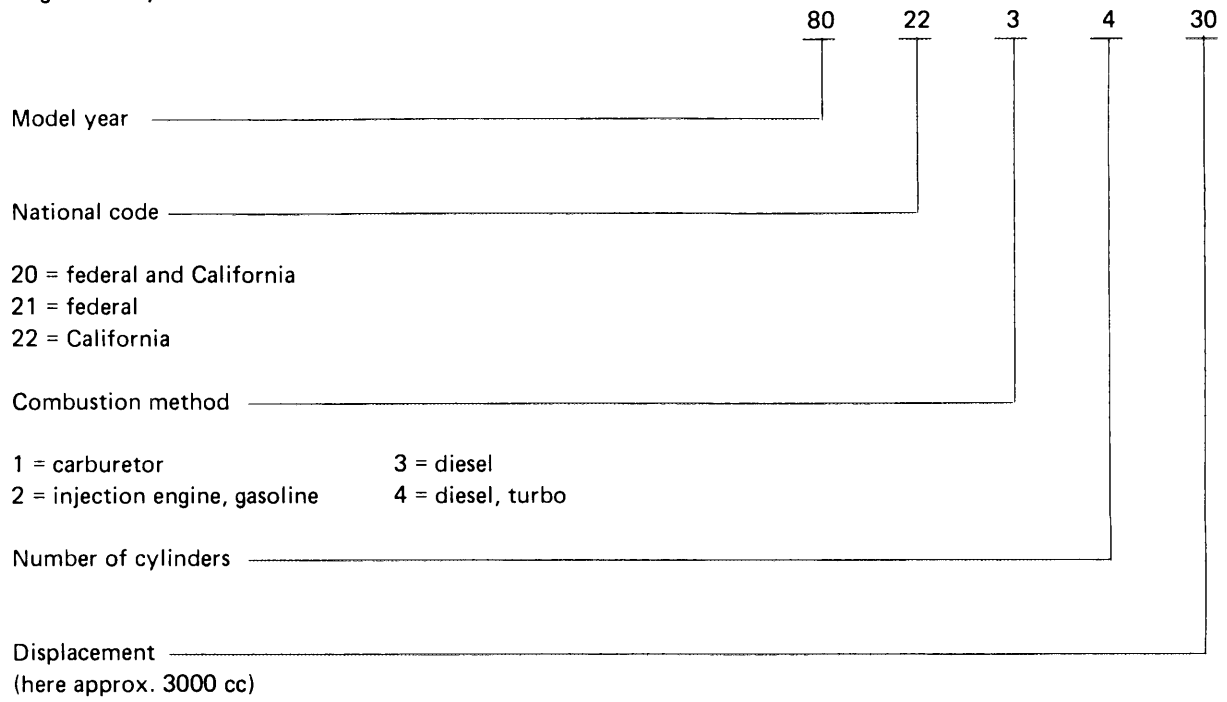
This label shows the engine identification data, as well as the most important engine adjusting data.



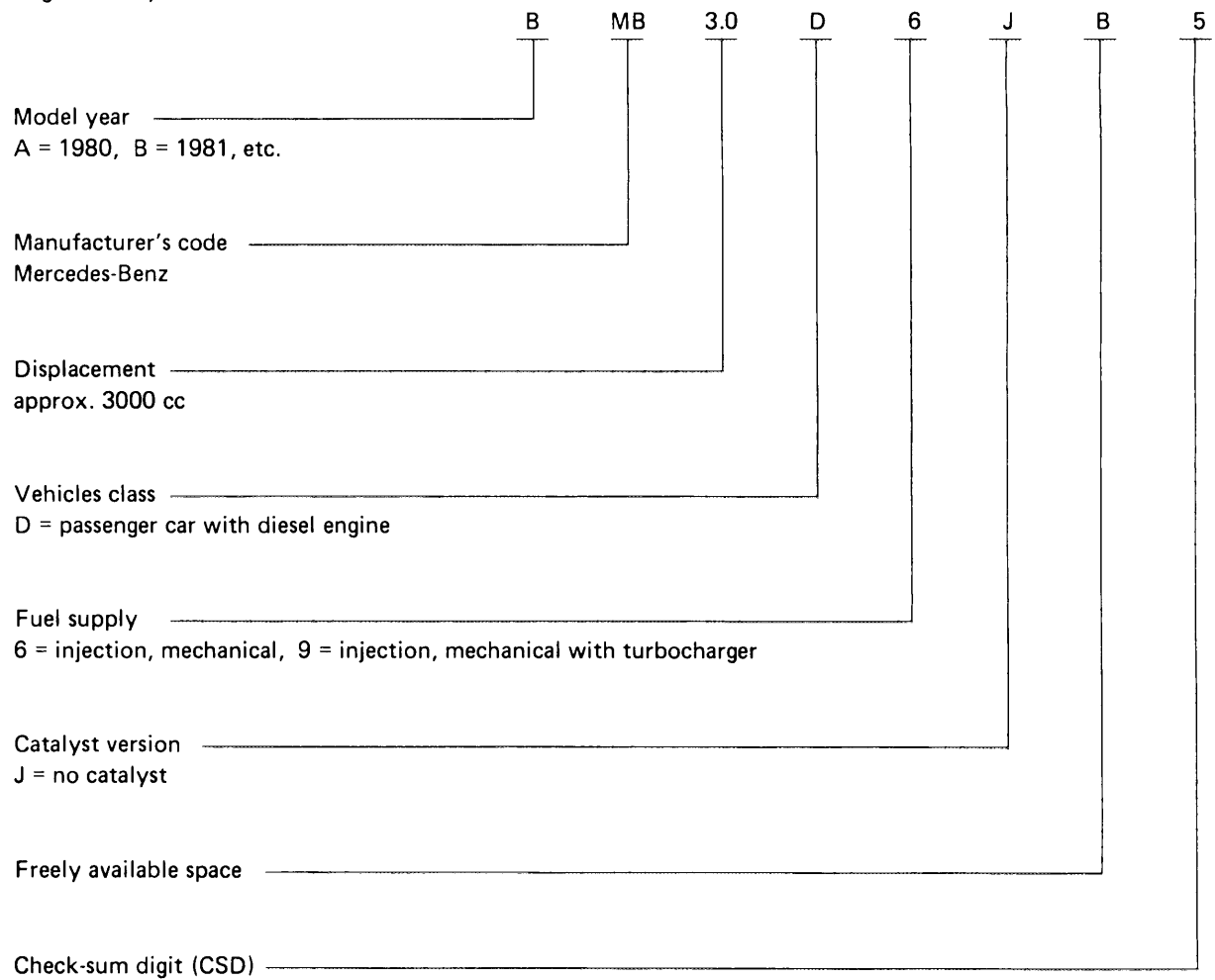
1074-9907

The identification data for model year 1980 are encoded with an 8-digit code, and for model year 1981 in a 10-digit code.

Example model year 1980:
 Engine family 80.22.34.30



Example model year 1981:
 Engine family B MB 3.0 D 9 JB 5



Color code of information labels on radiator bridge

Basic color/lettering

Model year	Federal version	California version
1980	black/white	yellow/black
1981 ¹⁾	black/white	

¹⁾ On model year 1981 only one version for federal and California

Information label on door post of driver's door (2)

This label shows whether vehicle is provided with or without catalyts.

No catalyts is installed on vehicles with diesel engines (NON CATALYST).



Information label (3, California only)

This label is a diagrammatic view of the vacuum lines layout for all emission control components in engine department.

