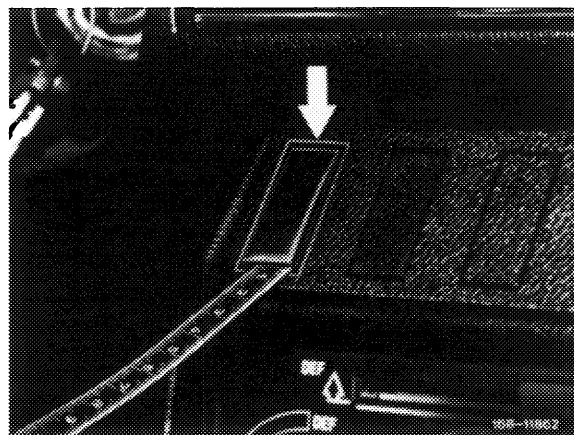


Removal

1 Take both foot mats out of front foot wells.

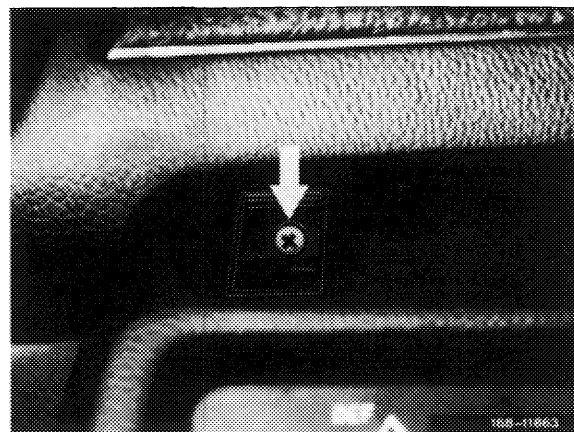
2 Press out the switch on the outside of the cover or the cover plate (arrow) from the cover.



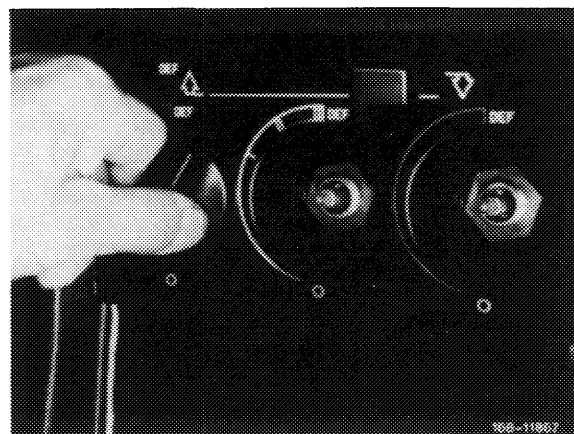
3 Unscrew both left and right screws on cover and lift off cover.

4 Remove cover from gearshift lever (68–230).

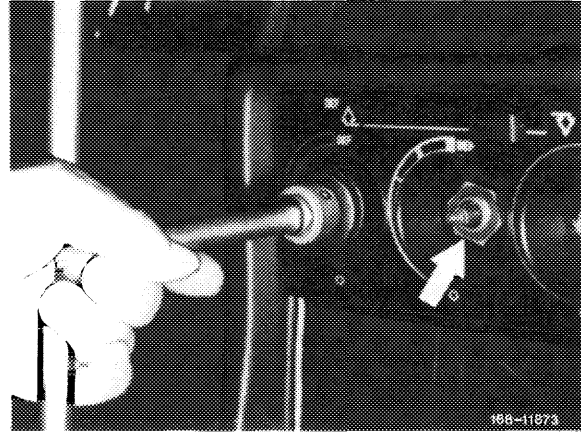
5 Remove radio.



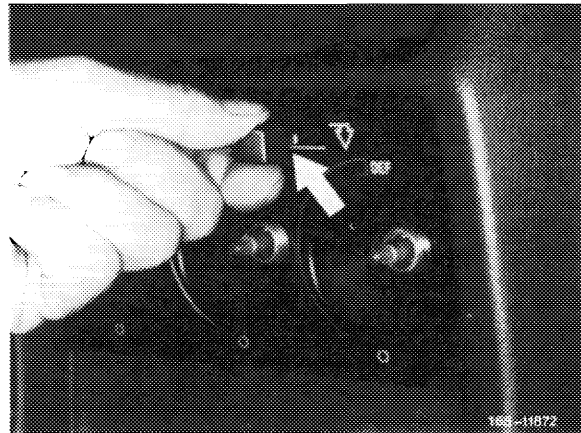
6 Pull off heater and blower control knobs.



7 Unscrew nuts on control unit (wrench size 24 mm).

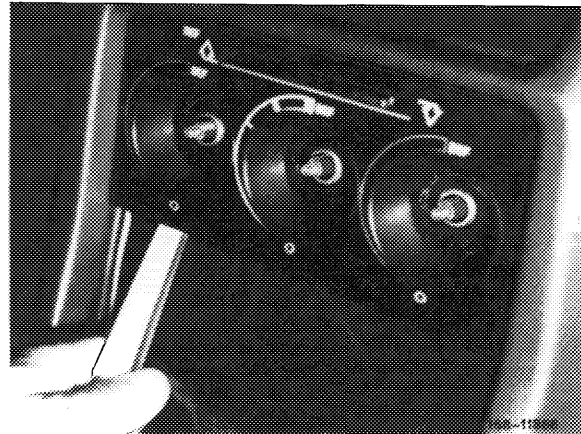


8 Pull knob off of control lever.

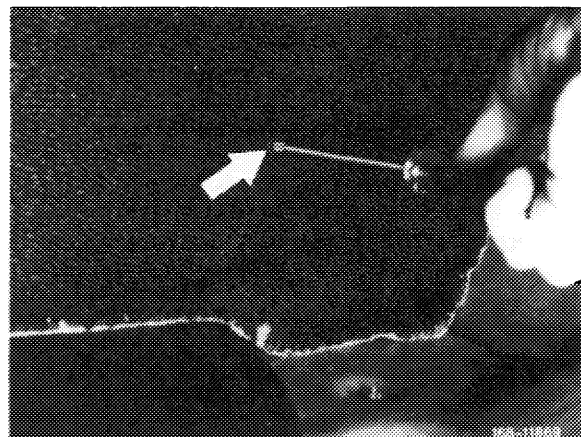


9 Remove cover plate.

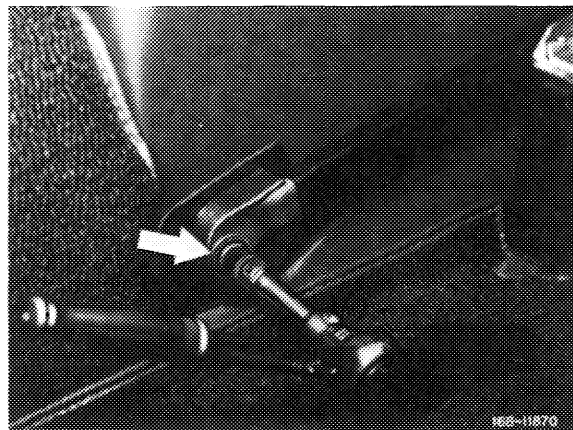
10 Pull light conductor wire off of cover plate.



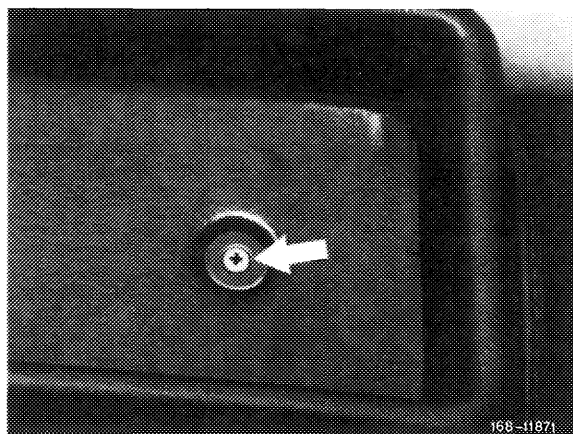
11 Unscrew bolts on both sides of front tunnel section.



12 Unscrew rear bolts on both sides of center console.



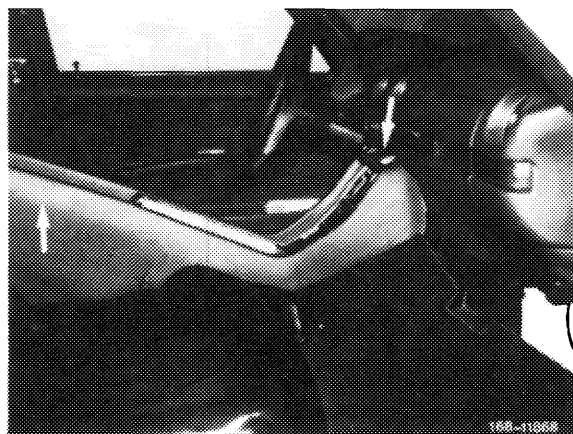
13 Remove screw from tray.



14 Lift rear of center console and pull it out of instrument panel. Prevent front end of center console from spreading apart.

Attention!

Be careful not to damage instrument panel in area of center console.



Installation

15 Install in reverse sequence.