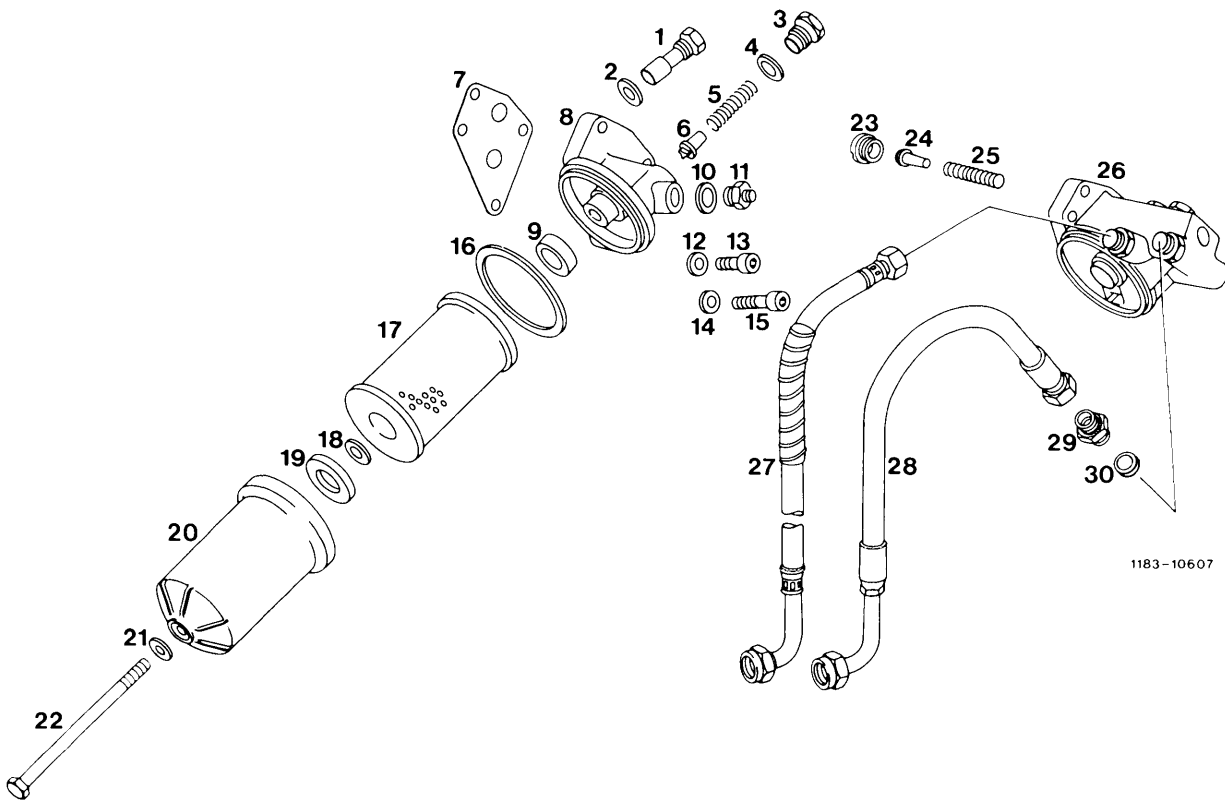


Oil filter, engines 115.923, 115.926, 115.938, 115.939, 115.951 and 115.954



1183-10607

- | | | |
|----|--|---|
| 1 | Hollow screw | Glued-in in oil filter top |
| 2 | Sealing ring | |
| 3 | Closing screw | With connection to pressure line of oil pressure indicator in instrument cluster on engines 115.938/939/954 |
| 4 | Sealing ring | A 20 x 24 Cu |
| 5 | Compression spring | |
| 6 | Valve cone bypass valve oil filter element | Opening pressure 3.5 ± 0.4 bar gauge pressure |
| 7 | Sealing | Between cylinder crankcase and oil filter top. Replace on principle, when installing oil filter top. |
| 8 | Oil filter top | |
| 9 | Sealing ring | Installation position in oil filter top. Separating dirty-oil end from cleaned oil end. Check whether cracked, swollen or squeezed. Replace, if required. |
| 10 | Sealing ring | A 14 x 18 St |
| 11 | Threaded stud | Connection to pressure line of oil pressure indicator in instrument cluster on engines 115.923/926/951 |
| 12 | Washer | 8.4, 3 each |
| 13 | Cylinder screw with hexagon socket | M 8 x 30, 3 each, tightening torque 23 Nm. Attachment oil filter top to cylinder crankcase. |
| 14 | Washer | 10.5, 1 each |
| 15 | Cylinder screw with hexagon socket | M 10 x 30, 1 each, tightening torque 46 Nm. Attachment oil filter top to cylinder crankcase. |
| 16 | Sealing ring | Replace on principle, when installing oil filter housing. |

17	Oil filter element	Driving-in filter, part No. 000 184 42 25, supplied in new and exchange engines. Exchange after having covered 500–1000 km for filter element 000 180 00 09. Subsequently exchange engine oil and oil filter element every 7500 km.
18 and 19	Sealing rings	Observe installation position. Refer to sectional drawing oil filter (18–005). Check whether cracked, swollen or squeezed, replace, if required.
20	Oil filter housing	
21	Sealing ring	A 10 x 15. Check, replace, if required.
22	Central screw	M 10 x 1 x 165 (engines 115.923/926 up to April 1974, 115.951 with air-oil cooler). M 10 x 1 x 195 (engines 115.923/926 starting April 1974, 115.938/939, 115.951 without air-oil cooler, 115.954). Tightening torque 40 Nm. Do not exceed value when tightening.

Only engine 115.951 with air-oil cooler

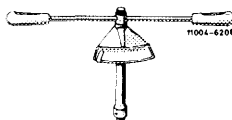
23	Valve seat ring bypass valve air-oil cooler	Glued-in in oil filter top
24	Valve cone bypass valve air-oil cooler	Opening pressure 1.5 + 0.2 bar gauge pressure
25	Compression spring	
26	Oil filter top	With threaded stud for connection to hose lines from and to air-oil cooler
27	Hose line	From air-oil cooler
28	Hose line	To air-oil cooler
		Note: Tighten screw caps of hose lines to 25 Nm on hose connection of oil filter top. Apply counterhold on hexagon of threaded stud therefor.
29	Threaded stud	A 10, glue-in in oil filter top
30	Sealing ring	A 16 x 20 Cu

Tightening torques		Nm
Fastening screws oil filter top on cylinder crankcase	M 8	23
	M 10	46
Zentral screw oil filter housing on oil filter top		40 ¹⁾
Screw caps hose lines on oil filter top		25

1) Do not exceed this value when tightening.

Special tool

Torque wrench 3/8" square, 8–32 Nm



001 589 51 21 00

Conventional tool

Torque wrench, double-armed,
1/2" square, 15–65 Nm

e.g. made by Stahlwille, D–5600 Wuppertal
order No. 72 Nm/6

Note

As from August 1974, the air-oil cooler has been dispensed with on model 115.017. The **oil filter without threaded stud** for connection to hose lines of air-oil cooler has the part No. 002 184 79 01.

Start of series production: August 1974

Model	Engine	Engine end No.		Chassis end No.
		manual transmission	automatic transmission	
115.017	115.951	017 225	010 345	027 506