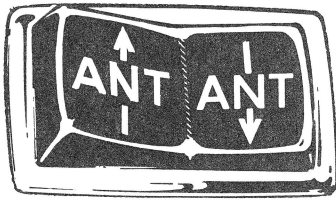


The power antenna can be adjusted to any height in order to facilitate radio reception under various conditions (city/country).

It can be operated via a rocker switch mounted in the center console.



1684 - 6643

Fig. 7

Rocker switch for antenna height adjustment

The electrical control system of the antenna has been modified and the antenna is now equipped with a water drain hose. Power is provided via terminal 30 so

that the antenna can be operated after turning off the ignition.

This has an additional advantage, aside from the height adjustment, in so far as the antenna does not have to be extended when operating the cassette system of the radio.

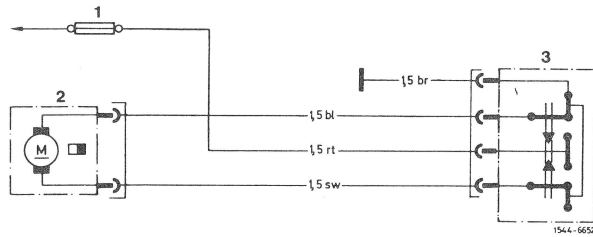


Fig. 8

Electrical diagram of power antenna