

Every 15 000 km / 10 000 miles

All types

Lights, indicators and signal system

Note

When checking exterior lights mirrors can be used to eliminate the necessity for a second man.

Ignition on

- With the engine switched off and the parking brake on, the following must be illuminated:
charging warning light
warning light for parking brake
and brake fluid level
- Check the following for correct function using the light switch or the combination switch:
illumination of instrument cluster and clock
parking lights
head light, low beam
high beam — blue warning light
fog lamp, rear fog lamp if fitted,
left and right turn indicators, warning lights
headlight flasher
brake lights, operate service brake to check
reversing lights, select reverse gear to check
electric horn, operate horn ring to check.

Ignition off

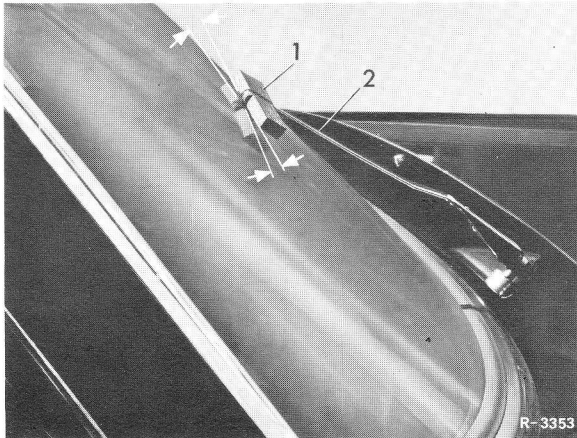
- Check function of
parking lights, left and right
hazard warning flasher system and indicator light.

Windshield washer system

- Clean jets with a suitable needle.
- Check adjustment of the jets. When the windshield washer system is operated, the jet of water should hit the windshield about $\frac{2}{3}$ of the way up.



R 82/6604

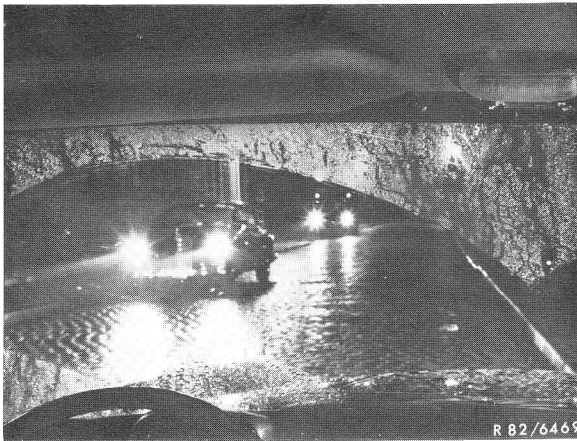


Correct wiper arm positioning

1 Wooden check gauge 2 Wiper arm

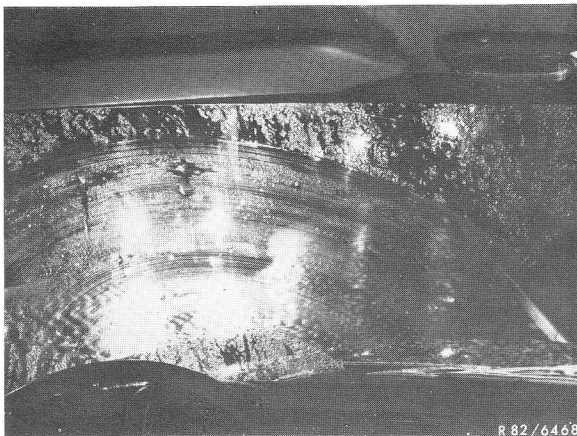
Windshield wiper

- Check rubber lips of wipers blades for hardening or cracks.
- Also ensure that the rubber lip of the wiper blade tilts over when the direction of movement changes. If necessary correct distortion of the wiper arm so that the end of the wiper arm lies parallel to the wiping area. This can be checked using an easily made wooden check gauge.



Wiping pattern with good wiper blades

- Operate windshield wipers and washer unit for a short period. The wiping area must be wiped clear.

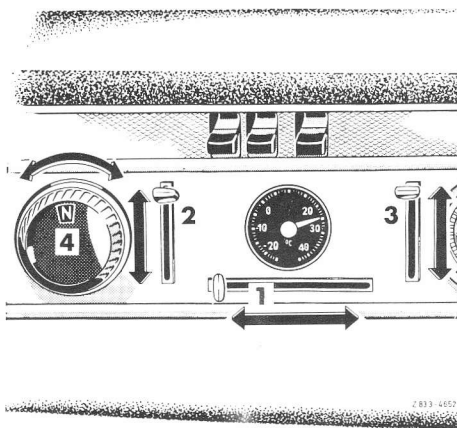


Wiping pattern with worn-out wiper blades
or dirty windshield

Heating and ventilation

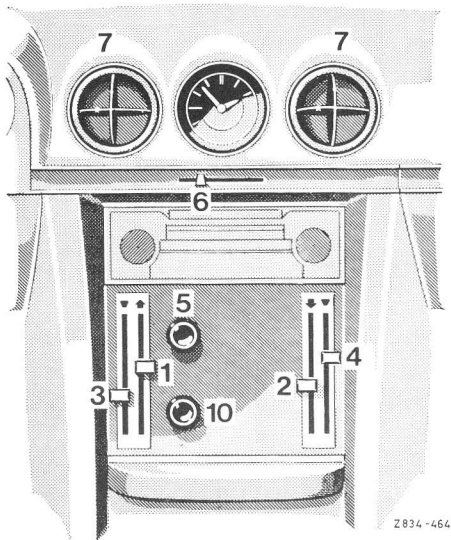
- Move air volume control lever or control lever for the ventilation to the "on" position, switch on blower and check through all stages (with the ignition switched on).
- Move control lever for heating or temperature selector knob in "heating" position; check lever for stiffness and heater unit for function.

Note: With stiff control levers or control valves of the heater unit, add 2 to 5 cm/ltr. of anti-corrosion oil into the cooling water.



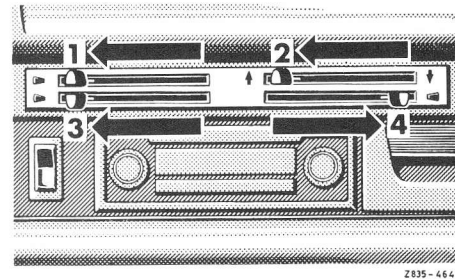
Type 100

- 1 Air volume control lever and blower switch
- 2, 3 Air distribution lever
- 4 Temperature selector knob



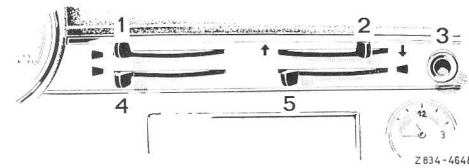
Type 107

- 1, 2 Air distribution lever
- 3, 4 Heater control lever
- 5 Blower switch
- 6 Control lever for ventilation



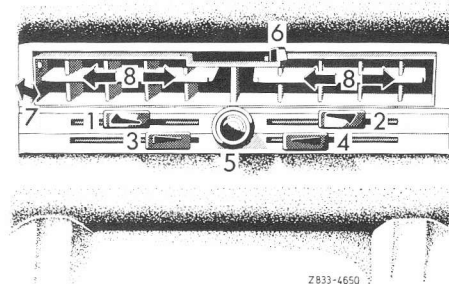
Types 108, 109, 111

- 1 Air volume control lever and blower switch
- 2 Air distribution lever
- 3, 4 Heater control lever



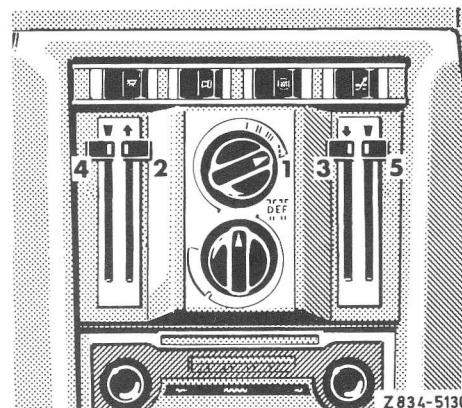
Type 113

- 1 Air volume control lever
- 2 Air distribution lever
- 3 Blower switch
- 4, 5 Heater control lever



Types 114, 115

- 1, 2 Air distribution lever
- 3, 4 Heater control lever
- 5 Blower switch
- 6 Control lever for ventilation



Type 116

- 1 Switch for air volume control and blower
- 2, 3 Air distribution lever
- 4, 5 Heater control lever